



Cercle de voile de Martigues

MICRO CLASS EUROPEAN CHAMPIONSHIPS 2021
Championnat d'Europe Micro Class 2021

SAILING INSTRUCTIONS



Jerome NUTTE
18/07/2021

The notation '[NP]' in a rule of the sailing instructions (SIs) means that a boat may not protest another boat for breaking that rule. This changes RRS 60.1(a).

The reference to [DP] in a rule means that the penalty for a breach of that rule may, at the discretion of the protest committee, be less than a disqualification.

1 RULES

1.1 The event is governed by the rules as defined in *The Racing Rules of Sailing*.

1.2 RRS 44.1 is changed as follows:

RRS 44.1. is changed so that the two turns penalty is replaced by a one turn penalty.

1.3 In case of a translation conflict, the English text will prevail.

2 CHANGES TO SAILING INSTRUCTIONS

2.1 Any change to the sailing instructions will be posted before 0900 on the day it will take effect, except that any change to the schedule of races will be posted by 2000 on the day before it will take effect.

3 COMMUNICATIONS WITH COMPETITORS

3.1 Notices to competitors will be posted on the official notice board located in front of the CLUB HOUSE and the Website <https://www.micro-2021.world/en/race/>

To inform the competitors of a new publication from the Organization or the Race Committee or the Jury, a WHATSAPP Group is set up.

Micro European Martigues
Groupe WhatsApp



3.2 The race office is on the Club.

3.3 On the water, the race committee intends to monitor and communicate with competitors on VHF radio channel <72>.

3.5 [DP] While racing except in an emergency, a boat shall not make voice or data transmissions and shall not receive voice or data communication that is not available to all boats.

4 CODE OF CONDUCT

4.1 [DP] Competitors and support persons shall comply with reasonable requests from race officials.

4.2 [DP] Competitors and support persons shall place advertising provided by the organizing authority with care, seamanship, in accordance with any instructions for its use and without interfering with its functionality.

5 SIGNALS MADE ASHORE

- 5.1 Signals made ashore will be displayed in flagpole in front of the Race Office.
- 5.2 When flag AP is displayed ashore, '1 minute' is replaced with 'not less than 45 minutes' in Race Signals AP.

6 SCHEDULE OF RACES

6.1

<u>Date</u>	<u>1st Warning Signal at</u>	<u>Races</u>
Monday, July 26th	12:00 14:00	Training Race Races to follow
Tuesday, July 27th	11:00	Races to follows
Wednesday, July 28th	11:00	Races to follows
Thursday, July 29th	11:00	Races to follows
Friday, July 30th	11:00	Races to follows

- 6.2 To alert boats that a race or sequence of races will begin soon, the orange starting line flag will be displayed with one sound at least five minutes before a warning signal is made.
- 6.3 On the last scheduled day of racing no warning signal will be made after **15:30**

7 CLASS FLAGS

- 7.1 The Class flag is MICROCLASS Flag.

8 RACING AREA

- 8.1 SI Addendum **A** shows the location of the racing area(s).

9 COURSES

- 9.1 In SI Addendum **B** shows the courses, including the approximate angles between legs, the order in which marks are to be passed, and the side on which each mark is to be left.
- 9.2 No later than the warning signal, the race committee signal vessel will display on board the course and the approximate compass bearing of the first leg.
- 9.3 Long Distance Race

No later than the warning signal, if the course includes an offset mark, the race committee will display flag D. Displaying a green flag together with flag D means that the offset mark is to be rounded and left on starboard. No green flag means that the offset mark is to be rounded and left on port (this changes Race signals).

10 MARKS

- 10.1 Marks are:
- 10.1a **Starting Mark:** INFLATABLE FFVOILE WHITE buoy
- 10.1. b **Finishing Mark:** SMALL INFLATABLE YELLOW buoy

10.2 **Short Race**

Marks 1, 2, 3S and 3P will be INFLATABLE **ORANGE** buoys.

New mark, as provided in SI 13: INFLATABLE **GREEN** buoy

10.3 **Long Distance Race** – The marks are shown in ADDENDUM C.

11 **OBSTRUCTIONS**

11.1 [NP] [DP]The area shows in the appendix A is prohibited

12 **THE START**

12.1 Races will be started using RRS 26 with the warning signal made **5** minutes before the starting signal.

12.3 The starting line is between a staff displaying an orange flag on the signal vessel at the starboard end and the course side of the port-end starting mark.

12.4 A boat that does not start within **4** minutes after her starting signal will be scored Did Not Start without a hearing. This changes RRS A5.1 and A5.2.

13 **CHANGE OF THE NEXT LEG OF THE COURSE**

13.1 To change the next leg of the course, the race committee will lay a new mark (or move the finishing line) and remove the original mark as soon as practicable. When in a subsequent change a new mark is replaced, it will be replaced by an original mark.

13.2 **Short Race**

a) When changing the windward mark (1 and 2), a new windward mark 1 will be placed without mark 2.

b) Except at a gate, boats shall pass between the race committee boat signalling the change of the next leg and the nearby mark, leaving the mark to port and the race committee boat to starboard. This changes RRS 28.

13.3 **Long Distance Race**

If a race committee boat staying close to a mark to be rounded displays:

Flag "C" together with a board "FINISH", boats shall go directly to the finish, ignoring the required side of the marks that have been neutralized. (This changes RRS 28 and 33)

13.4 The Race Committee may stop a race for one of the reasons listed in RRS 32.1.

14 **THE FINISH**

The finishing line will be between a staff displaying an blue flag on the Race Committee Boat and the finishing mark.

15 **PENALTY SYSTEM**

15.2 RRS 44.1 and P 2.1 are changed so that the Two-Turns Penalty is replaced by the One-Turn Penalty.

15.3 RRS Appendix P applies.

15.4 RRS Appendix P applies with the Two-Turns penalty replaced by the One-Turn Penalty.

15.5 RRS P2.3 does not apply and RRS P2.2 is changed so that it applies to any penalty after the first one.

16 **TIME LIMITS AND TARGET TIMES**

16.1 **Short Race**

16.1. a The Mark 1 Time Limit, Race Time Limit (see RRS 35), and the Finishing Window are shown in the table below.

Mark 1 Time Limit	Target time	Race Time Limit	Finishing Window
<i>30 minutes</i>	<i>60 minutes</i>	<i>90 minutes</i>	<i>30 minutes</i>

16.1. b If no boat has passed the first mark within the Mark 1 Time Limit, the race will be abandoned.

16.2 LONG DISTANCE RACES

Time Limit: Finish for the first boat no later than sunset

Sunset Time

Monday, 26	Tuesday, 27	Wednesday, 28	Tuesday, 29	Friday, 30
21:07	21:06	21:05	21:04	21:03

Boats, failing to finish within **2 hours** after the first boat sails the course and finishes or 30 minutes after the sunset, will be scored Time Limit Expired (TLE) without a hearing. This changes RRS 35, A4 and A5

16.3 The Finishing Window is the time for boats to finish after the first boat sails the course and finishes. Boats failing to finish within the Finishing Window, and not subsequently retiring, penalized, or given redress, will be scored Time Limit Expired (TLE) without a hearing. A boat scored TLE shall be scored points for the finishing place **one** more than the points scored by the last boat that finished within the Finishing Window. This changes RRS 35, A5.1, A5.2 and A10.

16.4 Failure to meet the Target Time will not be grounds for redress. This changes RRS 62.1(a).

17 HEARING REQUESTS

17.1 The protest time limit is **90 minutes** after the last boat finishes the last race of the day or the race committee signals no more racing today, whichever is later. The time will be posted on the official notice board and website <https://www.micro-2021.world/en/race/>

17.2 Hearing request forms are available from the race office at *the Race Office and website* <https://www.micro-2021.world/en/race/>

17.3 Hearing requests may also be sent by email to jury@micro-2021.world
The sending timestamp displayed on the mail header will be the time of delivery.

17.4 Notices will be posted no later than **30 minutes** after the protest time limit to inform competitors of hearings in which they are parties or named as witnesses. Hearings will be held in the protest room, located at *1st floor of the Race Office* beginning at the time posted.

17.5 A list of boats that have been penalized for breaking RRS 42 under Appendix P will be posted.

17.6 RRS 62.2(a) and 66.2(a) do not apply.

18 SCORING

18.1 **3** races are required to be completed to constitute a series.

18.2 (a) When fewer than **4** races have been completed, a boat's series score is the total of her race scores.

(b) When from **4 to 8** races have been completed, a boat's series score is the total of her race scores excluding her worst score.

(c) When **9** or more races have been completed, a boat's series score is the total of her race scores excluding her two worst scores.

18.3 Ties in a series score between boats shall be broken in favour of the boat that scored better in long

distance race. This changes RRS Appendix A8. If the long-distance race has not been raced or validated, ties will be broken according to RRS Appendix A8.

19 SAFETY REGULATIONS

- 19.1 [DP] On arrival in the racing area each day, each boat shall sail past the stern of the race committee signal boat on starboard tack and hail her sail or bow number until acknowledged by the race committee.
- 19.2 [DP] A boat that retires from a race shall notify the race committee at the first reasonable opportunity. Promptly after returning to shore, the boat shall complete a retirement declaration form, which is available at *the Race Office and website* <https://www.micro-2021.world/en/race/>
- 19.3 The Class Rule 04.08.05 may apply. To apply, the Race Committee will use the following signals:
- a - When flag" F" with sound signals is displayed ashore, the Class Rule 04.08.05 applies as soon as possible when the boats leave the harbour.
 - b – When flag" F" with sound signals is displayed on the starting boat before the warning signal, the Class Rule 04.08.05 applies no later than the preparatory signal,
 - c - When flag" F" with sound signals is displayed near a mark, the Class Rule 04.08.05 applies from that mark,
 - d – When flag" D" with sound signals is displayed at a mark, the Class Rule 04.08.05 no longer applies from this mark.

20 REPLACEMENTS OF CREW OR EQUIPMENT

- 20.1 [DP] Substitution of competitors is not allowed without prior written approval of the *Technical Committee*
- 20.2 [DP] Substitution of damaged or lost equipment is not allowed unless authorized in writing by the *Technical committee* Requests for substitution shall be made to the committee at the first reasonable opportunity, which may be after the race.

21 EQUIPMENT AND MEASUREMENT CHECKS

- 21.1 A boat or equipment may be inspected at any time for compliance with the class rules, notice of race and sailing instructions.
- 21.2 [DP] When instructed by a race official on the water, a boat shall proceed to a designated area for inspection.

22 Reserved

23 OFFICIAL VESSELS

- 23.1 Official vessels will be identified as follows: *White pennant*.

24 [DP] SUPPORT TEAMS

- 24.1 Team leaders, Coaches and other support personnel may use "support craft" to assist their competitors on the water. They shall register at the regatta office before the deadline, providing details on their boats and distinctive identification which shall include flying a White flag showing the national 3 letter code in black of the MNA.
- 24.2 Team leader, coaches and other support boats shall stay more than 150 meters to leeward of the starting line and from the leeward marks and from any racing MICRO from the time of the preparatory signal until all boats have finished the last race of the day, or all races are abandoned. Any physical contact between support boat and competitors are forbidden (except emergency) during this time.

25 **TRASH DISPOSAL**

25.1 Trash may be placed aboard official or support person vessels.

26 **BERTHING**

26.1 [DP] - boats must stay at anchor in front of the Sailing Club, or in a berth in the port of Jonquières, on the club's pontoon.

27 **HAUL-OUT RESTRICTIONS**

27.1 [DP] Boats shall not be hauled out during the event except with and according to the terms of prior written permission of the Race Committee.

28 **DIVING EQUIPMENT AND PLASTIC POOLS**

28.1 [DP] [NP] Underwater breathing apparatus and plastic pools or their equivalent shall not be used around keelboats between the preparatory signal of the first race and the end of the last race of the event.

28.2 [DP] [NP] Keelboats shall not be cleaned below the waterline by any means during the event.

29 **PRIZES**

29.1 Prizes will be given for

The General ranking winner will be declared the **MICRO CLASS 2021 EUROPEAN CHAMPION**

Prizes for the 1st, 2nd and 3rd on General

Prizes for the 1st, 2nd and 3rd in Racer Division,

Prizes for the 1st, 2nd and 3rd in Cruiser Division

Prizes for the 1st, 2nd and 3rd in Origin Division

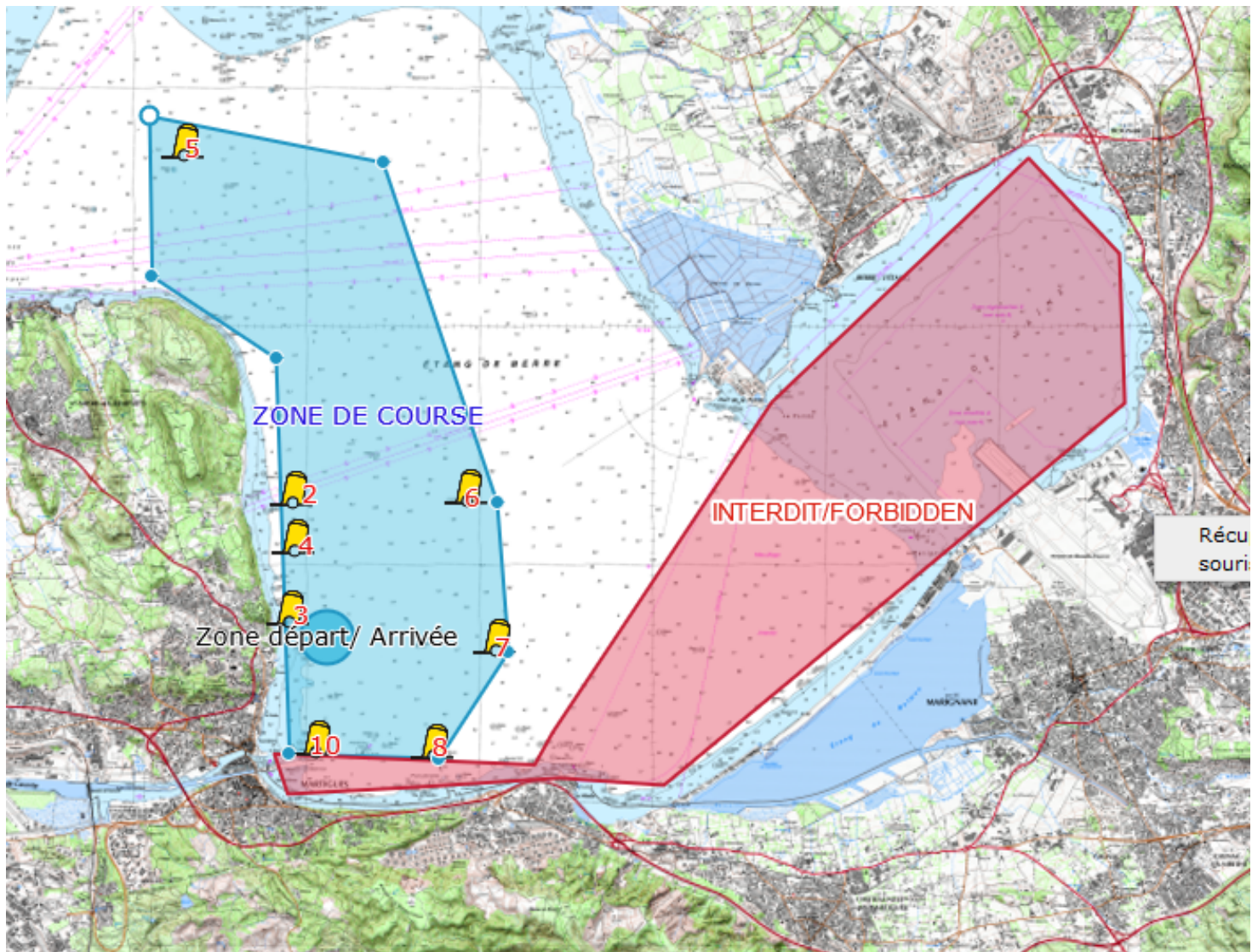
30 **RISK STATEMENT**

30.1 RRS 3 states: 'The responsibility for a boat's decision to participate in a race or to continue to race is hers alone.' By participating in this event each competitor agrees and acknowledges that sailing is a potentially dangerous activity with inherent risks. These risks include strong winds and rough seas, sudden changes in weather, failure of equipment, boat handling errors, poor seamanship by other boats, loss of balance on an unstable platform and fatigue resulting in increased risk of injury. **Inherent in the sport of sailing is the risk of permanent, catastrophic injury or death by drowning, trauma, hypothermia or other causes.**

31 **INSURANCES**

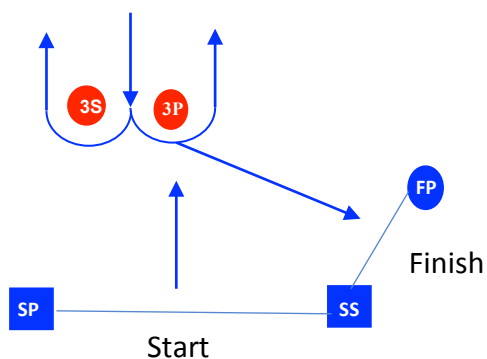
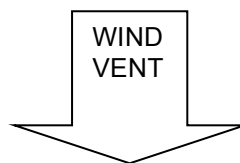
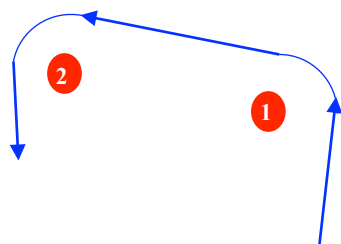
31.1 Each participating boat shall be insured with valid third-party liability insurance with a minimum cover of **2.000.000€** per incident or the equivalent.

APPENDIX A - RACE AREA AND FORBIDDEN AREA



APPENDIX B – SHORT RACES

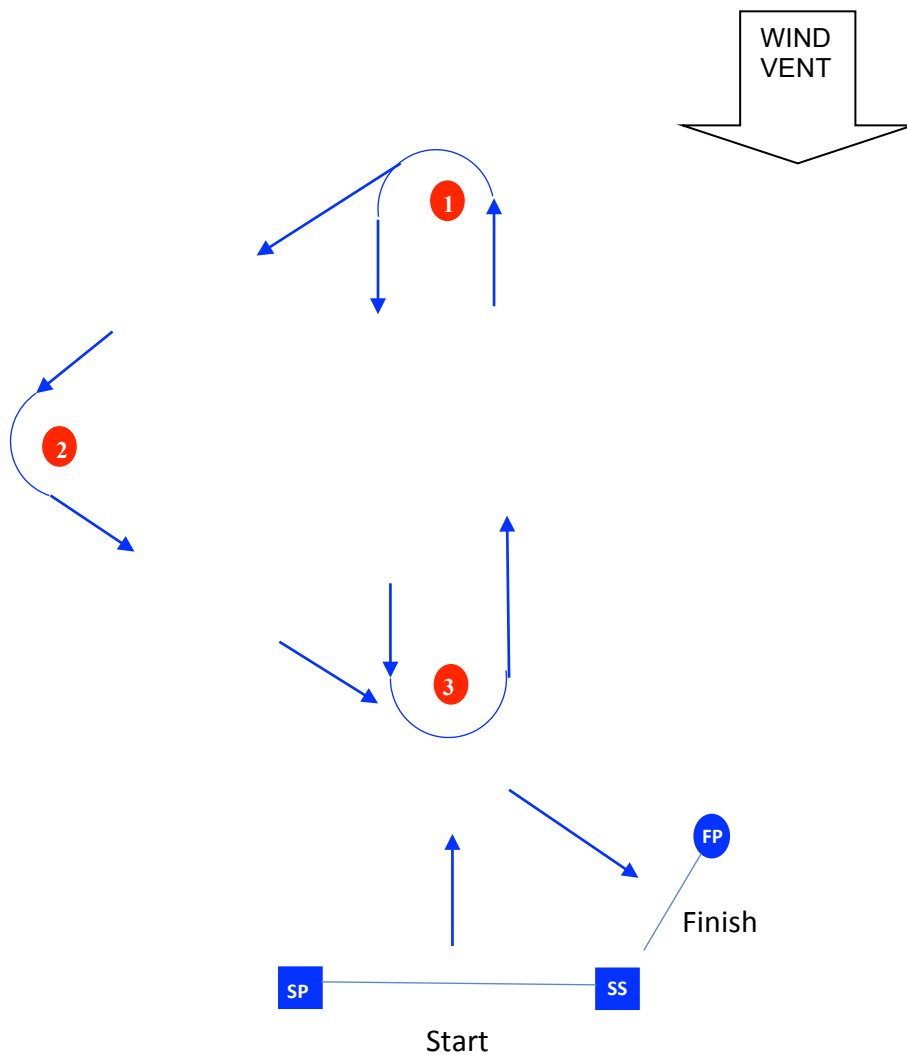
LR



COURSE WINDWARD /LEEWARD + REACHING	
SIGNAL	Mark Rounding Order / Ordre de passage
<u>LR 1</u>	Start – 1 – 2 – 3 – Finish
<u>LR 2</u>	Start – 1 – 2 – 3S/3P – 1 – 2 – 3 - Finish
<u>LR 3</u>	Start – 1 – 2 – 3S/3P – 1 – 2 – 3S/3P - 1 – 2 – 3 - Finish
<u>LR 4</u>	Start – 1 – 2 – 3S/3P – 1 – 2 – 3S/3P - 1 – 2 – 3S/3P - 1 – 2 – 3 Finish

APPENDIX B – SHORT RACES

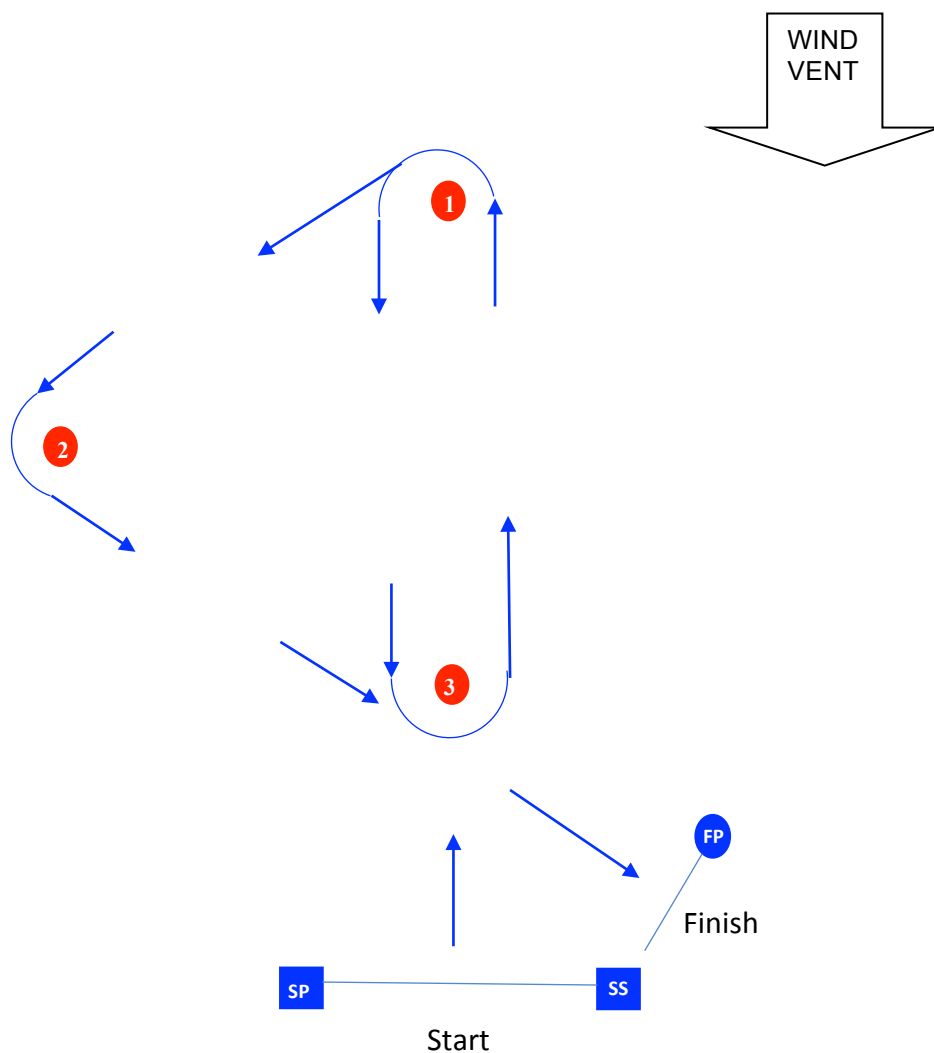
TR



COURSE TRIANGULAR + REACHING	
SIGNAL	Mark Rounding Order / Ordre de passage
<u>TR 1</u>	Start – 1 – 2 – 3 – Finish
<u>TR 2</u>	Start – 1 – 2 – 3 – 1 – 3 - Finish
<u>TR 3</u>	Start – 1 – 2 – 3 – 1 - 3 - 1 – 3 - Finish
<u>TR 4</u>	Start – 1 – 2 – 3 – 1 – 3 - 1 – 3 - 1 – 3 Finish

APPENDIX B – SHORT RACES

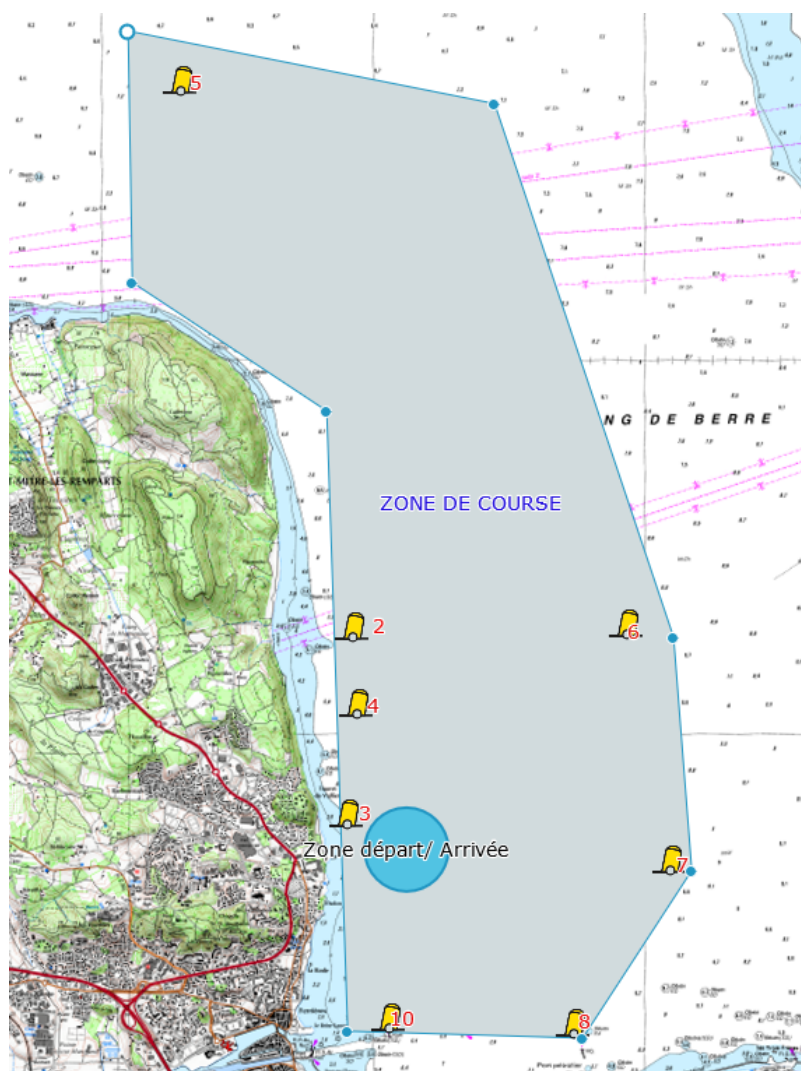
STR



COURSE SUPER TRIANGULAR + REACHING	
SIGNAL	Mark Rounding Order / Ordre de passage
<u>STR 2</u>	Start – 1 – 3 – 1 – 2 – 3 – Finish
<u>STR 3</u>	Start – 1 – 2 – 3 – 1 – 3 – 1 – 2 – 3 – Finish
<u>STR 4</u>	Start – 1 – 2 – 3 – 1 – 3 – 1 – 2 – 3 – 1 – 3 – Finish

APPENDIX C – LONG DISTANCE RACES

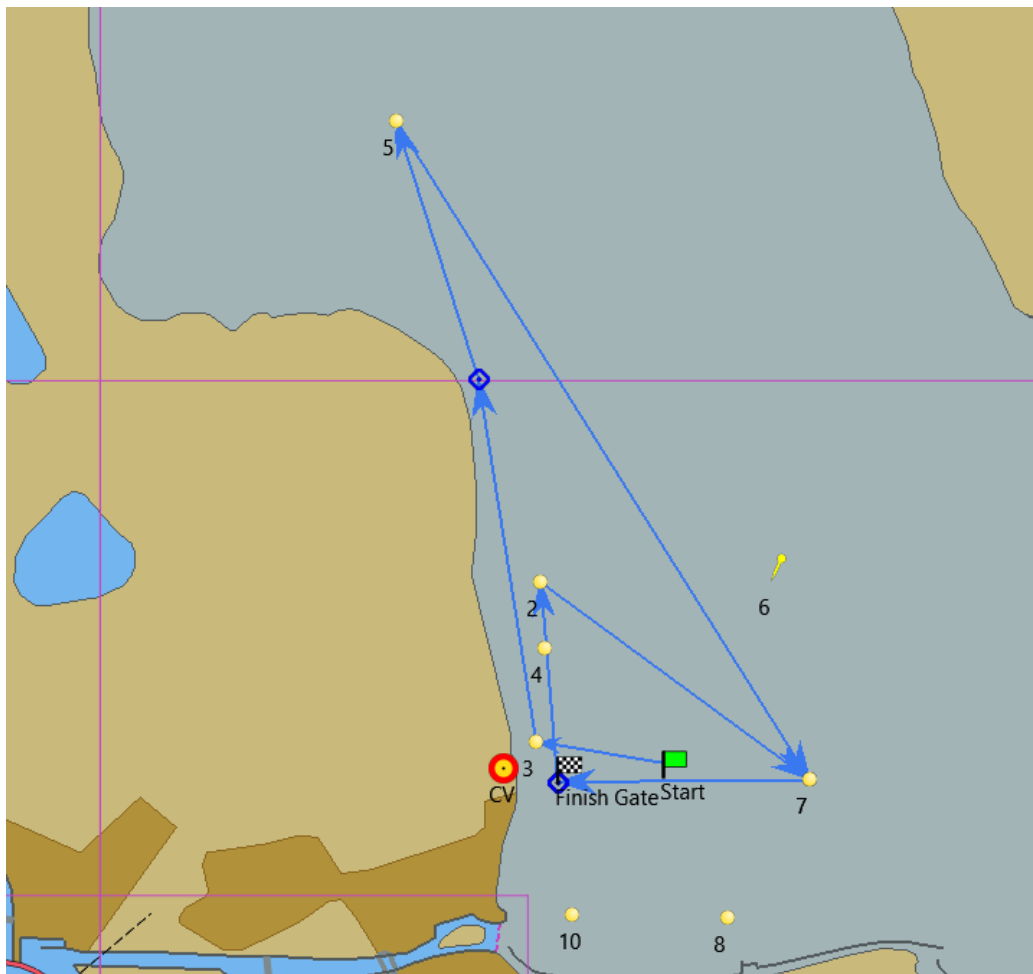
The coordinates of the marks are given as an indication and cannot be ground for a protest or a request for redress.



Mark N°	Name	Type	Position
1	Offset MARK	White FFVOILE	See SI 9.3
2		Yellow	43°26,523N / 05°03,844E
3		Yellow	43°25,517N / 05°03,802E
4		White FFVOILE	43°26,111N / 05°03,873E
5	SURVEY NORD	Special Mark	43°29,441N / 05°02,579E
6	GIPREB	Special Mark	43°26,538 N / 05°05,865E
7	SURVEY SUD	Special Mark	43°25,273N / 05°06'188E
8	MOLE TOTAL		43°24,400N / 05°05,471E
10		White FFVOILE	43°24'424N / 05°04,110E
	FINISH GATE	Race committee boat on starboard and yellow mark on port	In front of the Club

LONG DISTANCE RACES

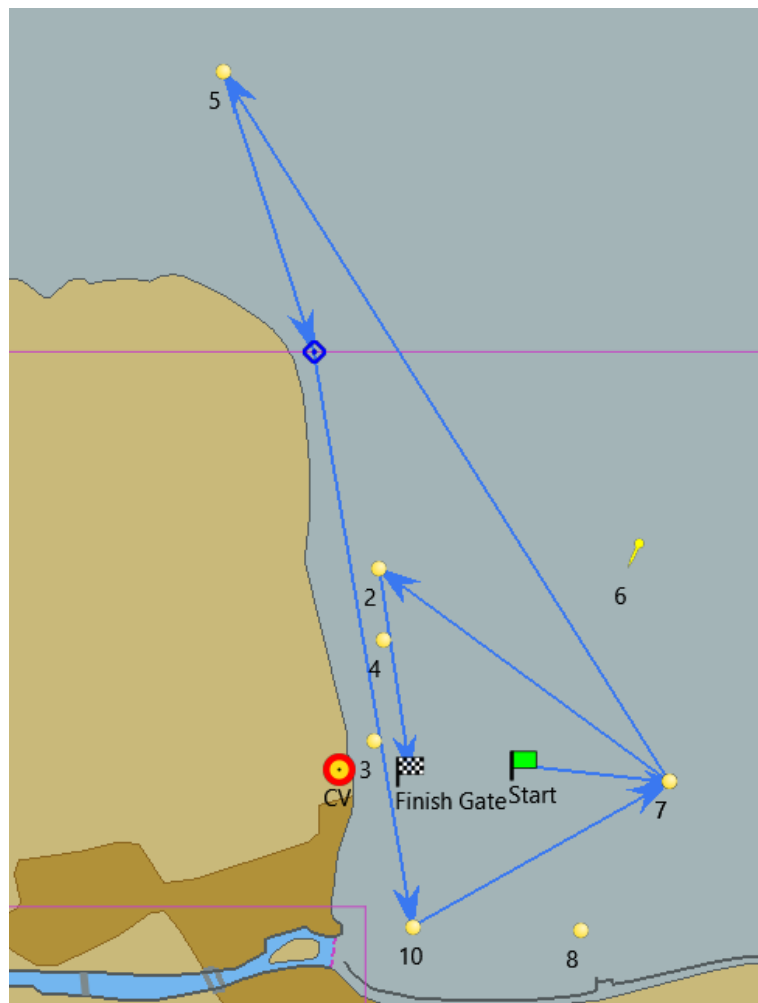
COURSE – LD 1



COURSE / DISTANCE	MARKS	<i>REQUIRED SIDE</i>
LD 1 16.5nm	- STARTING LINE Located approximately in the front of the Club	
	- OFFSET MARK – Sailing Instruction 9.3	
	- MARK 3	ON STARBOARD
	- MARK 5	ON STARBOARD
	- MARK 7	ON STARBOARD
	- FINISHING GATE Located approximately in front of the Club	
	- MARK 2	ON STARBOARD
	- MARK 7	ON STARBOARD
	- FINISH	

LONG DISTANCE RACES

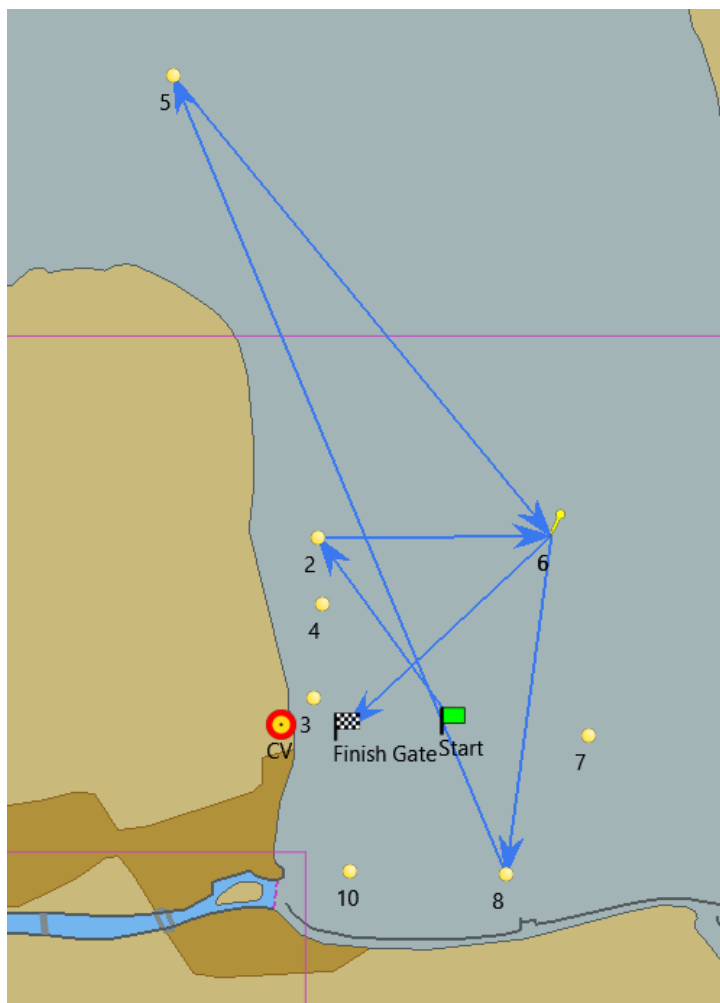
COURSE – LD 2



COURSE / DISTANCE	MARKS	REQUIRED SIDE
LD 2 16nm	- STARTING LINE Located approximately in the front of the Club	
	- OFFSET MARK – Sailing Instruction 9.3	
	- MARK 7	ON PORT
	- MARK 5	ON PORT
	- MARK 10	ON PORT
	- MARK 7	ON PORT
	- MARK 2	ON PORT
	- FINISH	

LONG DISTANCE RACES

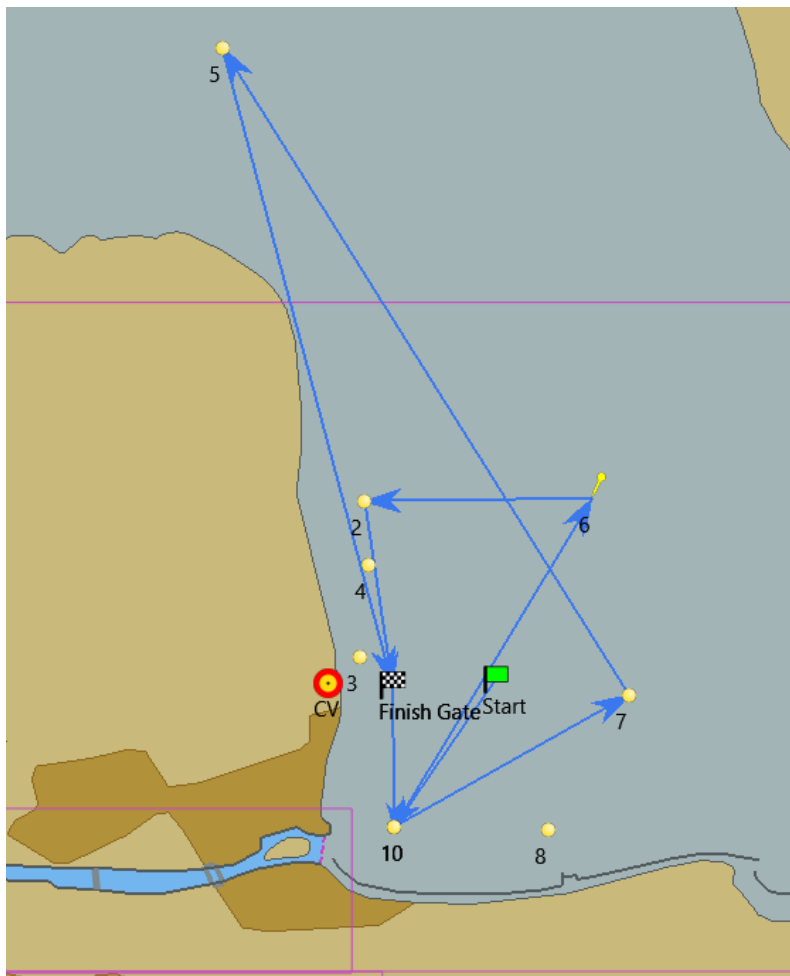
COURSE – LD 3



COURSE / DISTANCE	MARKS	<i>REQUIRED SIDE</i>
LD 3 16nm	- STARTING LINE Located approximately in the front of the Club	
	- OFFSET MARK – Sailing Instruction 9.3	
	- MARK 2	ON STARBOARD
	- MARK 6	ON STARBOARD
	- MARK 8	ON STARBOARD
	- MARK 5	ON STARBOARD
	- MARK 6	ON STARBOARD
	- FINISH	

LONG DISTANCE RACES

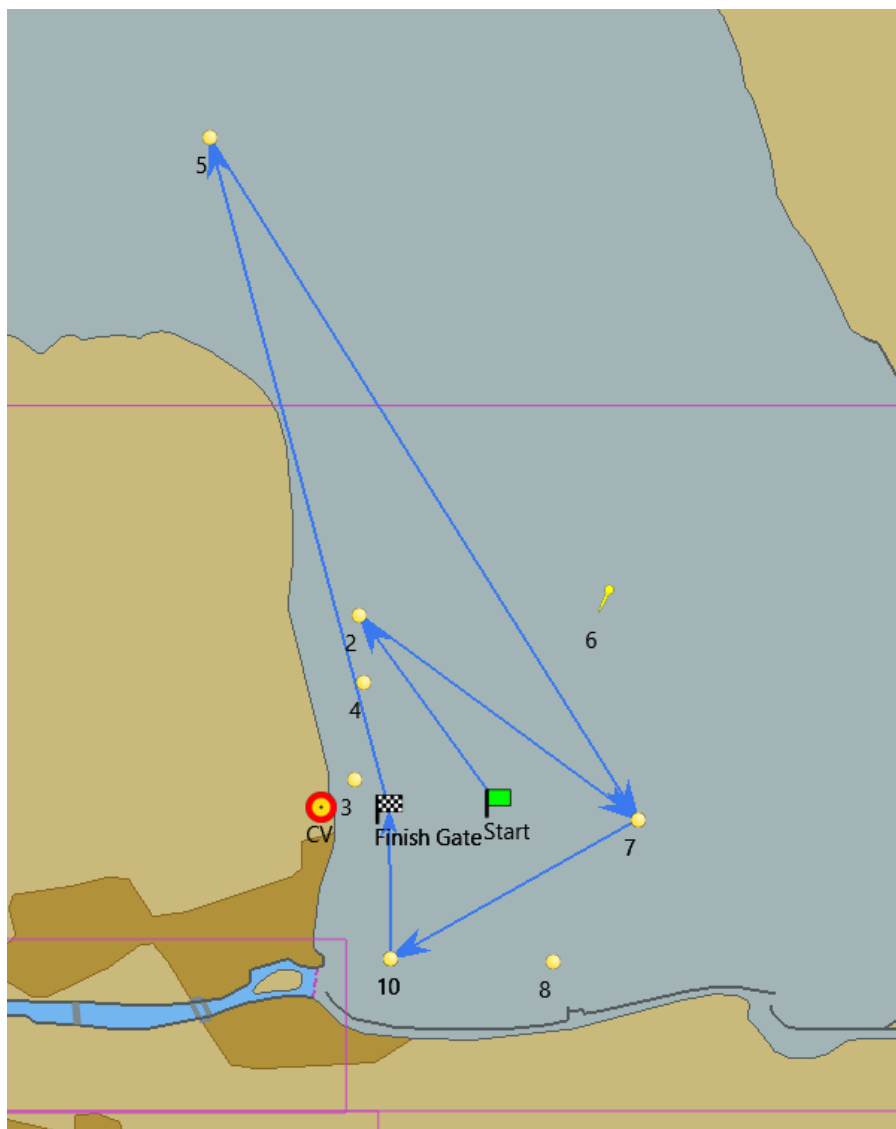
COURSE – LD 4



COURSE / DISTANCE	MARKS	REQUIRED SIDE	
LD 4 18nm	- STARTING LINE Located approximately in the front of the Club		
	- OFFSET MARK – Sailing Instruction 9.3		
	- MARK 10	ON PORT	
	- MARK 7	ON PORT	
	- MARK 5	ON PORT	
	FINISHING GATE Located approximately in front of the Club		
	- MARK 10	ON PORT	
	- MARK 6	ON PORT	
	- MARK 2	ON PORT	
	- FINISH		

LONG DISTANCE RACES

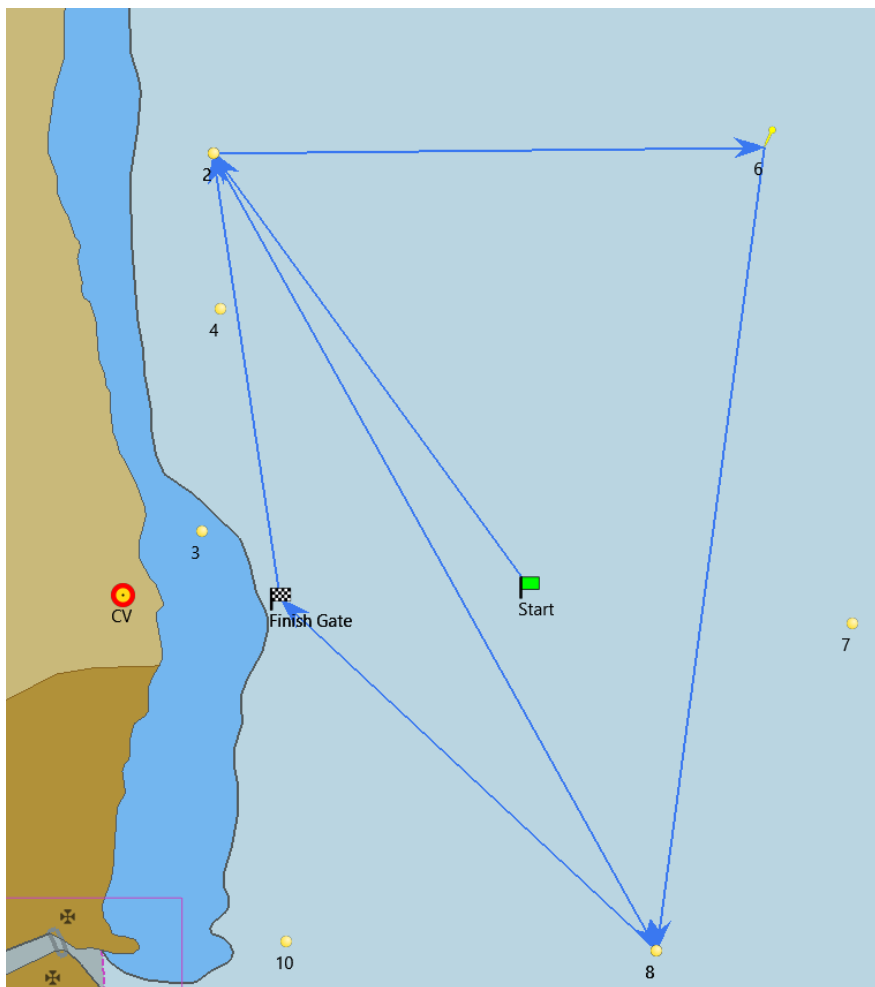
COURSE – LD 5



COURSE / DISTANCE	MARKS	REQUIRED SIDE	
LD 5 18nm	- STARTING LINE Located approximately in the front of the Club		
	- OFFSET MARK – Sailing Instruction 9.3		
	- MARK 2	ON STARBOARD	
	- MARK 7	ON STARBOARD	
	- MARK 10	ON STARBOARD	
	FINISHING GATE Located approximately in front of the Club		
	- MARK 5	ON STARBOARD	
	- MARK 7	ON STARBOARD	
	- MARK 10	ON STARBOARD	
	- FINISH		

LONG DISTANCE RACES

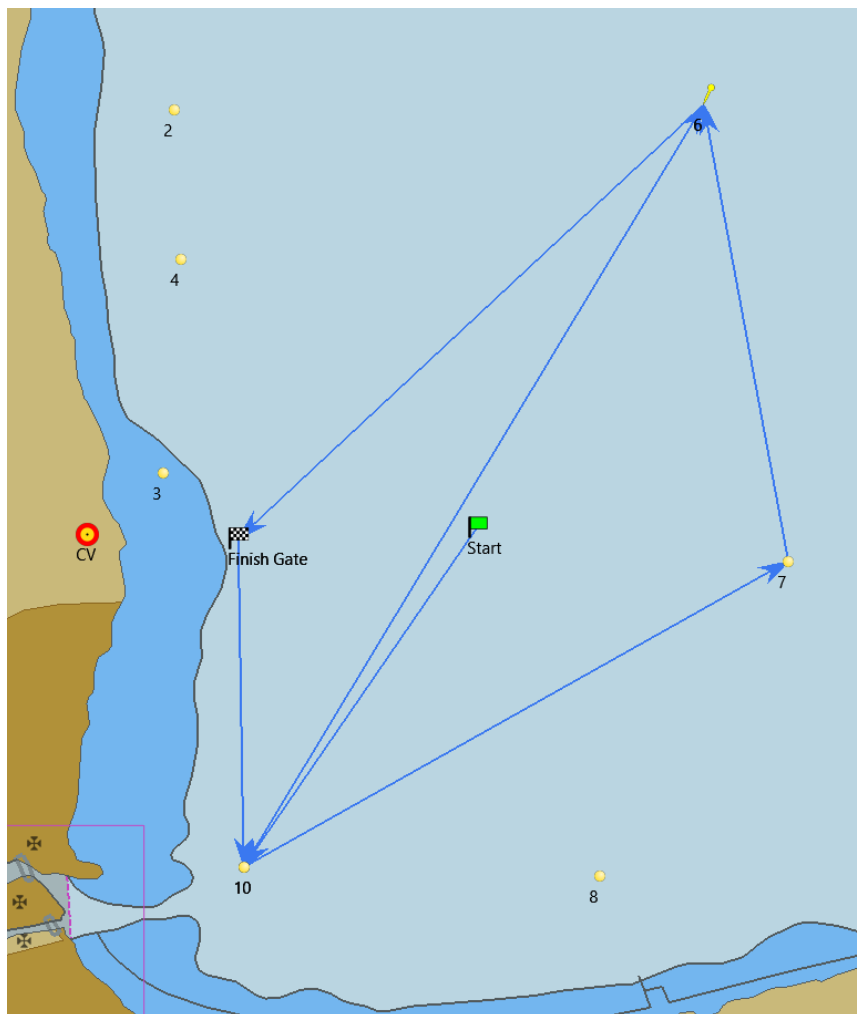
COURSE – LD 6



COURSE / DISTANCE	MARKS	REQUIRED SIDE
LD 6 11nm	- STARTING LINE Located approximately in the front of the Club	
	- OFFSET MARK – Sailing Instruction 9.3	
	- MARK 2	ON STARBOARD
	- MARK 6	ON STARBOARD
	- MARK 8	ON STARBOARD
	FINISHING GATE Located approximately in front of the Club	
	- MARK 2	ON STARBOARD
	- MARK 8	ON STARBOARD
	- FINISH	

LONG DISTANCE RACES

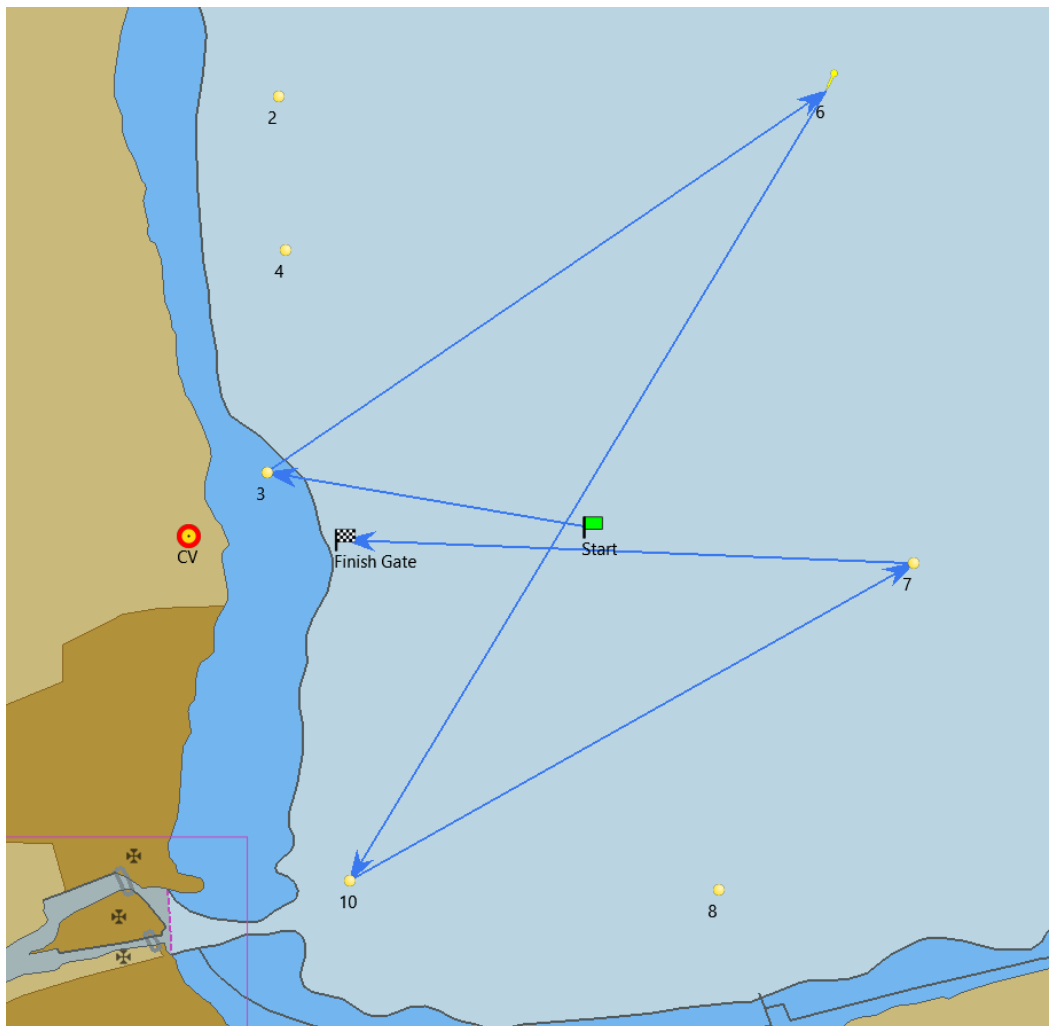
COURSE – LD 7



COURSE / DISTANCE	MARKS	<u>REQUIRED SIDE</u>	
LD 7 11nm	- STARTING LINE Located approximately in the front of the Club		
	- OFFSET MARK – Sailing Instruction 9.3		
	- MARK 10	ON PORT	
	- MARK 7	ON PORT	
	- MARK 6	ON PORT	
	FINISHING GATE Located approximately in front of the Club		
	- MARK 10	ON PORT	
	- MARK 6	ON PORT	
	- FINISH		

LONG DISTANCE RACES

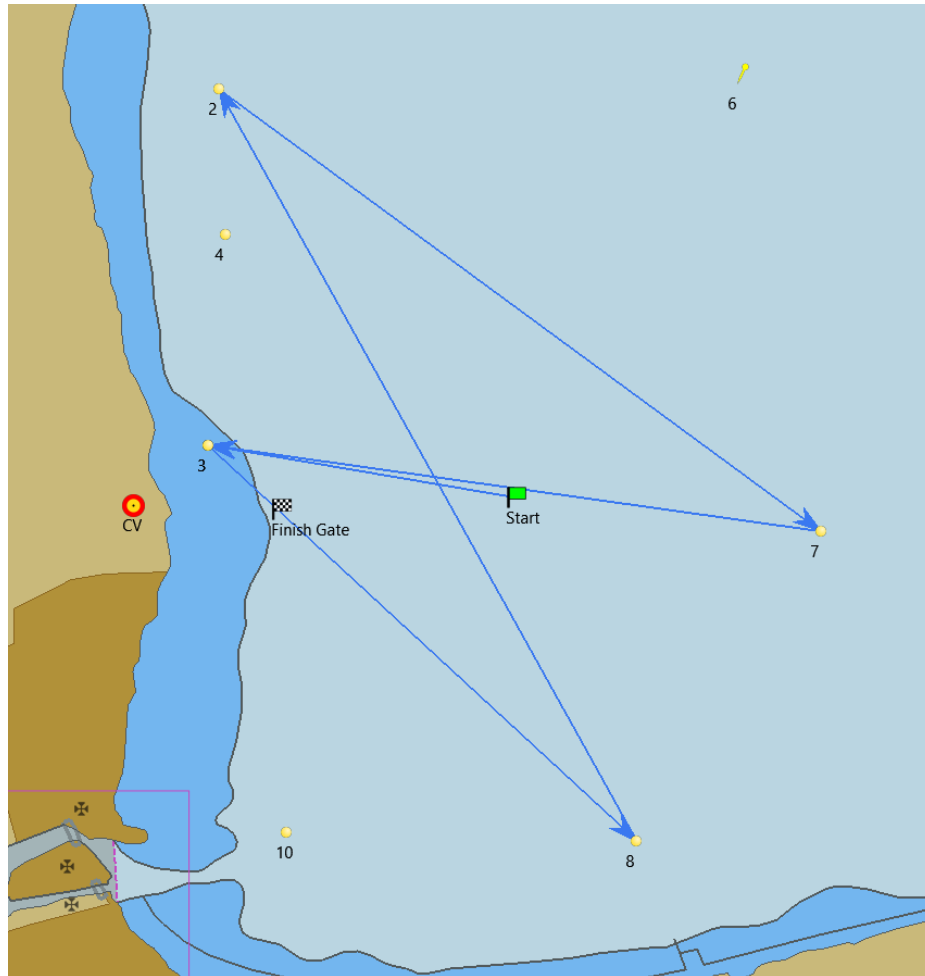
COURSE – LD 8



COURSE / DISTANCE	MARKS	<i>REQUIRED SIDE</i>
LD 8 8.5nm	- STARTING LINE Located approximately in the front of the Club	
	- OFFSET MARK – Sailing Instruction 9.3	
	- MARK 3	ON STARBOARD
	- MARK 6	ON STARBOARD
	- MARK 10	ON PORT
	- MARK 7	ON PORT
	- FINISH	

LONG DISTANCE RACES

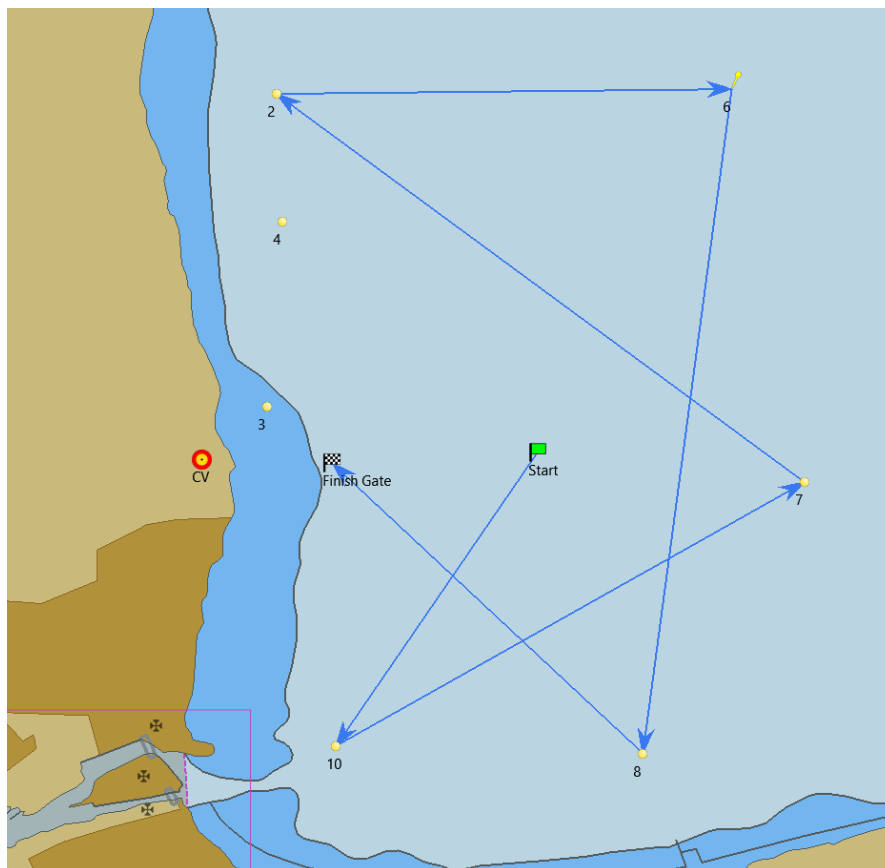
COURSE – LD 9



COURSE / DISTANCE	MARKS	<i>REQUIRED SIDE</i>
LD 9 9nm	- STARTING LINE Located approximately in the front of the Club	
	- OFFSET MARK – Sailing Instruction 9.3	
	- MARK 3	ON PORT
	- MARK 8	ON PORT
	- MARK 2	ON STARBOARD
	- MARK 7	ON STARBOARD
	- FINISH	

LONG DISTANCE RACES

COURSE – LD 10



COURSE / DISTANCE	MARKS	<u>REQUIRED SIDE</u>
LD 10 10nm	- STARTING LINE Located approximately in the front of the Club	
	- OFFSET MARK – Sailing Instruction 9.3	
	- MARK 10	ON PORT
	- MARK 7	ON PORT
	- MARK 2	ON STARBOARD
	- MARK 7	ON STARBOARD
	- MARK 8	ON STARBOARD
	- FINISH	