



SAILING INSTRUCTIONS

[DP] denotes a rule for which the penalty is at the discretion of the International Jury;

[SP] denotes a rule for which a standard penalty may be applied by the race committee without a hearing or a discretionary penalty applied by the International Jury with a hearing;

[NP] denotes a rule that shall not be grounds for protests by a boat. This changes RRS 60.1(a).

1 RULES

- 1.1 The regatta will be governed by the rules as defined in The Racing Rules of Sailing (RRS) 2013-2016,
- 1.2 The Federation Française de Voile prescriptions that apply are stated in full in NOR Addendum
- 1.3 If there is a conflict between languages the English text will take precedence.

2 NOTICES TO COMPETITORS

Notices to competitors will be posted on the **official notice board** located at SR BREST CLUB HOUSE

3 CHANGES TO SAILING INSTRUCTIONS

Any change to the sailing instructions will be posted before 09:00 am on the day it will take effect, except that any change to the schedule of races will be posted by 08:00 pm on the day before it will take effect.

4 SIGNALS MADE ASHORE

- 4.1 Official signals made ashore will be displayed at SR BREST CLUB HOUSE.
- 4.2 When flag AP is displayed ashore, '1 minute' is replaced with 'not less than **45 minutes**' in the race signal AP.
- 4.3 [DP] [NP] When flag "AP over H" is displayed ashore, the boats **shall not** leave the harbor.
- 4.4 When flag Y is displayed ashore, rule 40 applies at all times while afloat. This changes the Part 4 preamble.

5 SCHEDULE OF RACES

5.1 Practice Race:

Monday August 10, 2015 1 Race, warning signal at 11:00 am

5.2 Racing Program

Monday	August 10, 2015	02:00 pm first warning signal and Races to follow
Tuesday	August 11, 2015	01:00 pm first warning signal and Races to follow
Wednesday	August 12, 2015	01:00 pm first warning signal and Races to follow
Thursday	August 13, 2015	01:00 pm first warning signal and Races to follow
Friday	August 14, 2015	12:00 am first warning signal and Races to follow

- 5.3 After a long postponement, to alert boats that a race or sequence of races will begin soon, an orange flag will be displayed with one sound for at least five minutes before a warning signal is displayed.

- 5.4 On the last day of the regatta no warning signal will be made after 03.30 pm.

6 CLASS FLAGS

Class flags will be: MICROCLASS Flag

7 RACING AREAS

The race area will be in the BREST BAY, in Addendum 1



8 THE COURSES

- 8.1 The diagrams in Addendum 2 (short race) and 3 (long distance) show the courses, including the approximate angles between legs, the order in which marks are to be passed, and the side on which each mark is to be rounded.
- 8.2 No later than the warning signal, the race committee signal boat will display on board, the course and the approximate compass bearing of the first leg
- 8.3 *Long Distance Race*

At the latest than the warning signal, the race committee will display the flag D if the course includes an offset mark. He will display the green flag if the mark is to be rounded and left on starboard. No green flag means that the offset mark is to be rounded and left on port (this changes Race signals).

9 MARKS

- 9.1 Short Race
Marks 1, 2, 3S and 3P will be INFLATABLE RED
Marks 4, 5 will be INFLATABLE ORANGE
- 9.2 Long Distance Race – The marks are shown in ADDENDUM 3
- 9.3 New marks, as provided in sailing instruction 12.1, will be INFLATABLE YELLOW.
- 9.4 Finish mark will be INFLATABLE WHITE.
- 9.5 A race committee boat signalling a change of a leg of the course is a mark as provided in instruction 12.4.

10 [DP] AREAS THAT ARE CLOSED TO SHIPPING

- 10.1 The following areas are designated as closed to shipping:
Ile Longue – Military area delimited by Yellow buoys – shown in Addendum1
Military Area in harbour – shown in addendum 1
- 10.2 Whether boats are racing or not, they must not enter or cross these forbidden areas. Penalties for these breaches may be less than disqualification (DSQ) if the jury so decides.

11 THE START

- 11.1 Races will be started by using rule 26 with the warning signal made 5 minutes before the starting signal.
- 11.2 The starting line will be between staffs displaying an orange flag on two Race Committee Boats.
- 11.3 **[SP]** A boat starting later than 4 minutes after her starting signal will be scored Did Not Start (DNS) without a hearing. This changes RRS A4 and A5.
- 11.4 When Flag U is displayed as the preparatory signal, no part of a boat's hull, crew or equipment shall be in the triangle formed by the ends of the starting line and the first mark during the last minute before her starting signal. If a boat breaks this rule and is identified, she shall be disqualified without a hearing but not if the race is restarted or re-sailed or postponed or abandoned before the starting signal. This changes RRS 26, 63.1 and A5. RRS 29.1 Individual recall does not apply. The scoring abbreviation for a flag U penalty is UFD. This changes A11 Scoring Abbreviations.



12 CHANGE TO THE NEXT LEG OF THE COURSE

- 12.1 To change the next leg of the course, the race committee will lay a new mark (or move the finishing line) and remove the original mark as soon as practicable. When in a subsequent change a new mark is replaced, it will be replaced by an original mark.
- 12.2 In a change in short race to the windward mark (Marks 1 and 2), only the mark 1 will be moved, the mark 2 will be removed,
- 12.3 Except at a gate, boats shall pass between the race committee boat signalling the change of the next leg and the nearby mark, leaving the mark to port and the race committee boat to starboard. This changes RRS 28.1.
- 12.4 **Long Distance Race**
If a committee boat, near a mark, shows the "C Flag" and "finish" on board, boats shall go directly to the finish line. The marks, described between the mark which is indicated by the change of course and the finish line, are neutralized and no longer have a required side. (This changes RRS 28 and 33)

13 THE FINISH

- 13.1 The finishing line will be between a staff displaying an orange flag on the Race Committee Boat and the finishing mark.
- 13.2 **For the Long Distance Race**
The Finishing line will be located in front of the Commercial Harbour. See in addendum 3 – Long Distance

14 PENALTY SYSTEM

- 14.1 The rule 44.1 and P2.1 are changed so that the Two-Turns Penalty is replaced by the One-Turn Penalty.
- 14.2 Appendix P will apply as changed by sailing instruction 14.1

15 TIME LIMITS AND TARGET TIMES

15.1 Time limits and target times are as follows:

15.1. a **SHORT RACES**

Time Limit	Mark 1 Time limit	Target time
90 minutes	30 minutes	60 minutes

In the Short races, if no boat has passed Mark 1 within the Mark 1 time limit the race will be abandoned. Failure to meet the target time will not be grounds for redress. This changes the rule 62.1(a).

[SP] Boats failing to finish within **30 minutes** after the first boat sails the course and finishes will be scored Did Not Finish (DNF) without a hearing. This changes RRS 35, A4 and A5.

15.1. b **LONG DISTANCE RACES**

Time limit
Finish for the first boat no later than sunset





Sunset Time

Monday	August 10, 2015	09:43 pm
Tuesday	August 11, 2015	09:41 pm
Wednesday	August 12, 2015	09:40 pm
Thursday	August 13, 2015	09:38 pm
Friday	August 14, 2015	09:36 pm

[SP] For the Long distance Race, Boats failing to finish within **2 hours** after the first boat or 30 minutes after the sunset sails the course and finishes will be scored Did Not Finish (DNF) without a hearing. This changes RRS 35, A4 and A5.

16 PROTESTS AND REQUESTS FOR REDRESS

- 16.1 When Protesting about an incident in the racing area, a boat shall display the red flag as described in RRS 61.1(a). This changes RRS 61.1. (a) (2).
- 16.2 Protest forms are available at the race office, located at the CENTRE NAUTIQUE MUNICIPAL. Protests and requests for redress or reopening shall be delivered there within the appropriate time limit.
- 16.3 The protest time limit is **90 minutes** after the last boat has finished the last race of the day.
- 16.4 Notices will be posted no later than **30 minutes** after the protest time limit to inform competitors of hearings in which they are parties or named as witnesses. Hearings will be held in the protest room, located at CENTRE NAUTIQUE MUNICIPAL, beginning at the time posted.
- 16.5 Notices of protests by the race committee or International Jury will be posted to inform boats under rule 61.1(b).
- 16.6 A list of boats that, under sailing instruction 14.2, have been penalized for breaking rule 42 will be posted.
- 16.7 Breaches of sailing instructions marked [NP] and RRS 55 will not be grounds for a protest by a boat. This changes the rule 60.1(a). Penalties for these breaches, breaches of sailing instructions marked [DP] or breaches of Class Rules may be less than disqualification (DSQ) if the jury so decides. The scoring abbreviation for a discretionary penalty imposed under this instruction will be DPI.
- 16.8 On the last scheduled day of racing a request for reopening a hearing shall be delivered
- (a) Within the protest time limit if the requesting party was informed of the decision on the previous day;
 - (b) No later than 30 minutes after the requesting party was informed of the decision on that day.
- This changes the rule 66.
- 16.9 On the last scheduled day of racing a request for redress based on a International Jury decision shall be delivered no later than 30 minutes after the decision was posted. This changes the rule 62.2.
- 16.10 Decisions of the International Jury will be final as provided in rule 70.5.

17 SCORING

- 17.1 3 races are required to be completed to constitute a series.
- 17.2 13 races maximum with the long distance race are scheduled.



- 17.3 (a) When fewer than 4 races have been completed, a boat's series score will be the total of her race scores.
(b) When from 4 to 8 races have been completed, a boat's series score will be the total of her race scores excluding her worst score.
(c) When 9 or more races have been completed, a boat's series score will be the total of her race scores excluding her two worst scores.
- 17.4 Ties in a series score between boats shall be broken in favour of the boat that scored better in long distance race. This changes RRS Appendix A8. If the long distance race has not been raced or validated, ties will be broken according RRS Appendix A8.

18 [DP] [NP] SAFETY REGULATIONS

- 18.1 On arrival in the racing area each day, each boat shall sail past the stern of the race committee signal boat on starboard tack and hail her sail or bow number until acknowledged by the race committee.
- 18.2 A boat that retires from racing shall notify the race committee before leaving the racing area, or if that is not possible, shall notify the race office as soon as possible after returning ashore.
- 18.3 Boats retiring from racing in accordance with SI 18.2 shall complete a retirement declaration form at the race office before the protest time limit.
- 18.4 When berthed, boats shall be kept in their assigned places in the harbour
- 18.5 The Class Rule 04.08.05 may apply. To apply, the Race Committee will use the following signals :
- a - When a "F" flag with sound signals is displayed ashore, the Class Rule 04.08.05 applies as soon as possible when the boats leave the harbour
 - b – When a "F" flag with sound signals is displayed on the starting boat before the warning signal, the Class Rule 04.08.05 applies no later than the preparatory signal,
 - c - When a "F" flag with sound signals is displayed near a mark, the Class Rule 04.08.05 applies from this mark,
 - d – When a "D" flag with sound signals is displayed at a mark , the Class Rule 04.08.05 no longer applies from this mark.

19 [DP] [NP] REPLACEMENT OF CREW OR EQUIPMENT

- 19.1 Substitution of competitors will not be allowed without prior written approval of the International Jury
- 19.2 Substitution of damaged or lost equipment will not be allowed unless authorized by the Race Committee. Requests for substitution shall be made to the Race Committee at the first reasonable opportunity.

20 [DP] [NP] EQUIPMENT AND MEASUREMENT CHECKS

A boat or equipment may be inspected at any time for compliance with the class rules and sailing instructions. On the water, a boat can be instructed by a race committee equipment inspector or measurer to proceed immediately to a designated area for inspection.

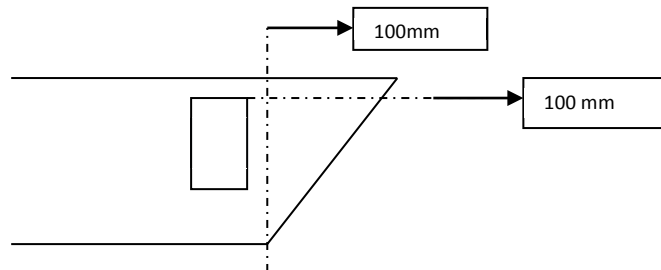
21 [DP][NP] ADVERTISING

Boats are required to display the advertising that will be provided by the Organizing Authority and shall be fixed in accordance with the following instructions:

Organization advertising stickers shall be placed in sides of the hull as follows:

Not more than 100mm from the deck

Not more than 100mm from the bow imaginary line as described below:



22 OFFICIAL BOATS

Official boats will be marked as follows: SR BREST FLAG.

Jury boat: yellow flag with letter "JURY"

23 [DP] SUPPORT BOATS

23.1 Team leaders, coaches and other support personnel shall stay outside areas where boats are racing from the time of the preparatory signal for the first class to start until all boats have finished or retired or the race committee signals a postponement, general recall or abandonment.

23.2 From the time it leaves the dock where it is moored and until the boat has finished the last race of the day, support boats must have no contact with a boat registered to the regatta any kind including:

(i) A signal visual of any kind (eg tactical placement, use of the flag and / or different colored clothes) while the boats are racing,

(ii) The transfer of crew, equipment or supply without permission from the race committee or according SI 19.2,

23.3 At all times, support boats shall comply with the directions given by the Race Committee. In particular this includes assisting with rescues when requested to do so.

23.4 Support boats shall display their national flag

24 [DP] [NP] TRASH DISPOSAL

Boats shall not put trash in the water. Trash may be placed aboard support and race committee boats.

25 [DP] [NP] HAUL-OUT RESTRICTIONS

All boats shall not be hauled out during the regatta except with and according to the terms of prior written permission from the race committee.

26 [DP] [NP] DIVING EQUIPMENT AND PLASTIC POOLS

Underwater breathing apparatus and plastic pools or their equivalent shall not be used around all boats between the preparatory signal of the first race and the end of the regatta.

27 [DP] [NP] RADIO COMMUNICATION

Except in an emergency, a boat shall neither make radio transmissions while racing nor receive radio communications not available to all boats. This restriction also applies to mobile telephones.



28 PRIZES

General Winner of the Champion title will be declared the MICRO CLASS 2015 WORLD CHAMPION

Prizes for the 1st, 2nd and 3rd on General

Prizes for the 1st, 2nd and 3rd in Racer Division,

Prizes for the 1st, 2nd and 3rd in Cruiser Division

29 DISCLAIMER OF LIABILITY

Competitors participate in the regatta entirely at their own risk. See RRS rule 4, Decision to Race. The organizing authority will not accept any liability for material damage or personal injury or death sustained in conjunction with or prior to, during, or after the regatta.

30 INSURANCE

Each participating boat shall be insured with valid third-party liability insurance with a minimum cover of 1 500 000 € per event or the equivalent.

31 RIGHT TO USE NAME AND LIKENESS

By participating in the MICRO CLASS WORLD CHAMPIONSHIP – 39th MICRO CUP, competitors automatically grant to the Organizing Authority and the event sponsors the right, in perpetuity, to make, use and show, at their discretion, any photography, audio, and video recording, or other reproductions of them made at the venue or on the water from the time of their arrival at the venue until their final departure, without compensation

32 RACE OFFICERS TEAM

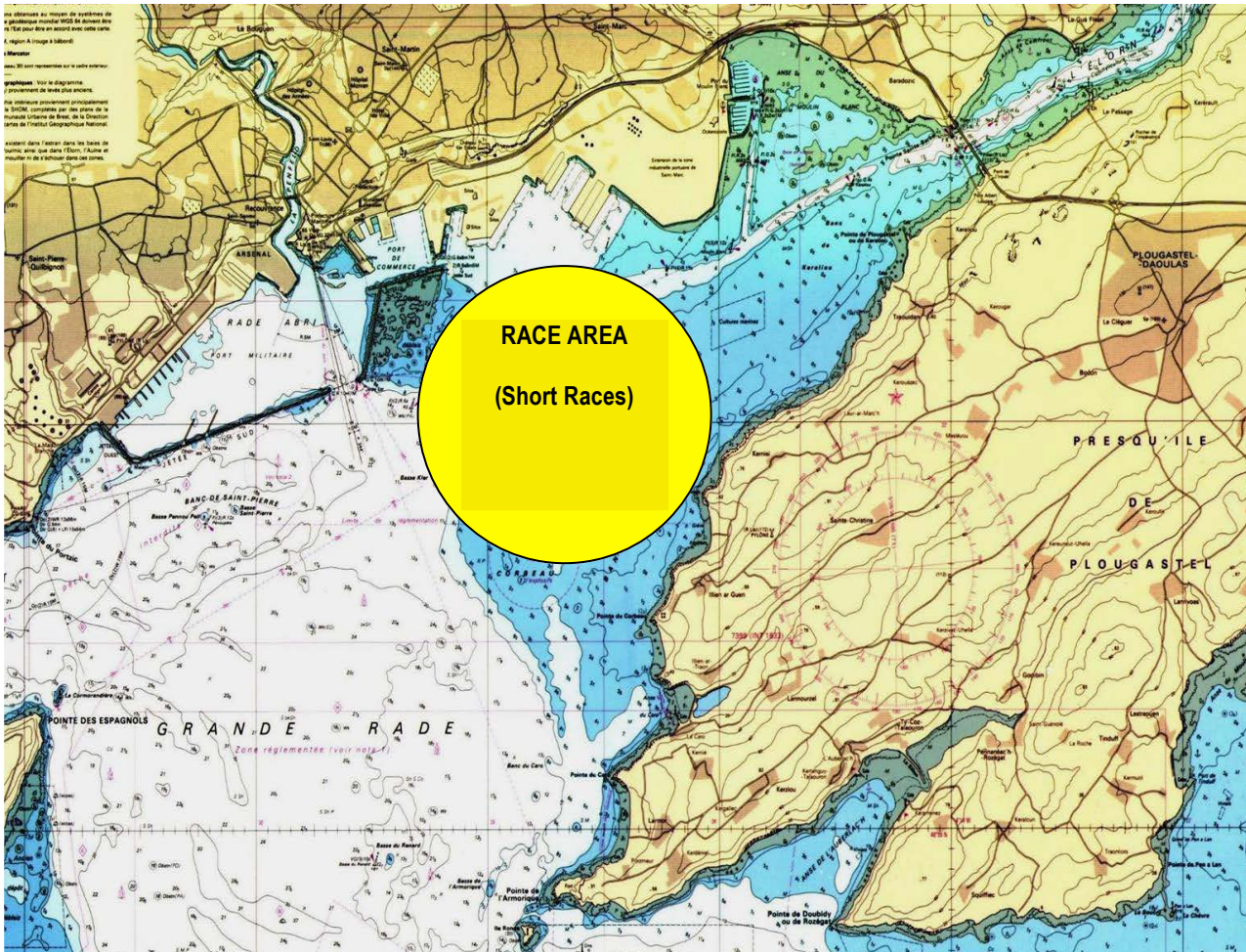
RACE OFFICERS		
RACE COMMITTEE	Jérôme NUTTE - Chairman	International Race Officer - FRA
	Brice DANIEL	National Race Officer - FRA
	Jean-Claude LE FLOC'H	National Race Officer - FRA
	Bertrand NARDIN	Regional Race Officer - FRA
MEASUREMENT	Manfred BAUENDAHL	International MicroClass Measurer - GER
	Christian GREGORI	MicroClass Measurer
INTERNATIONAL JURY	Romain GAUTIER	International Judge - FRA
	Georges PRIOL	International Judge - FRA
	Francesco VIDAL MAESTRE	International Judge - ESP
	Malen FERRER TOMAS	National Judge - ESP
	Robin MEADS	National Judge - GBR





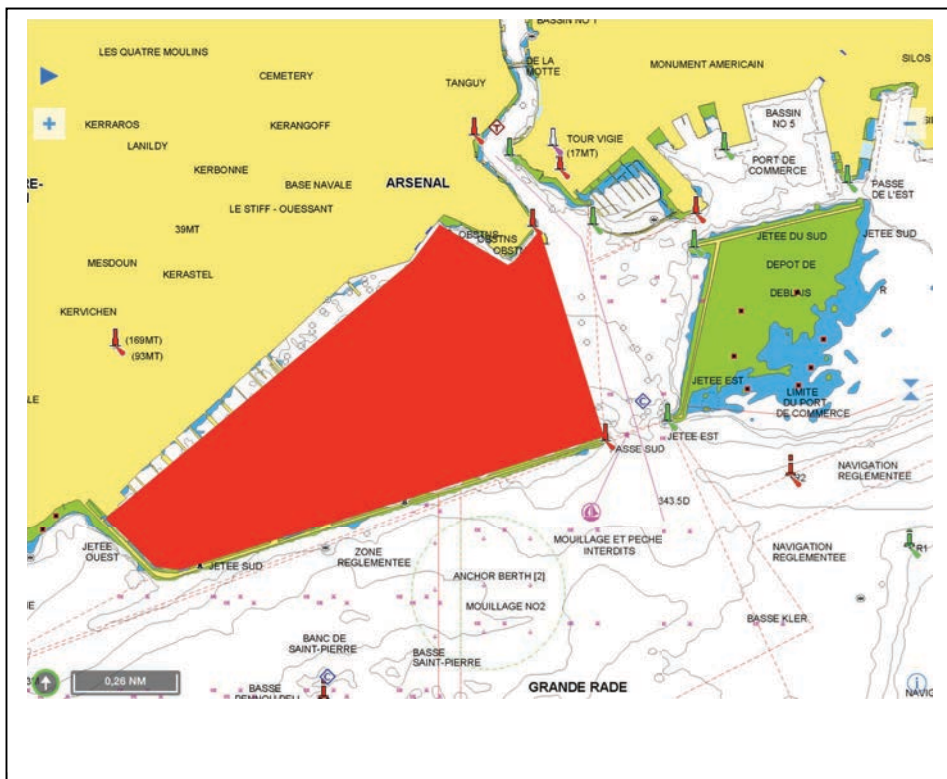
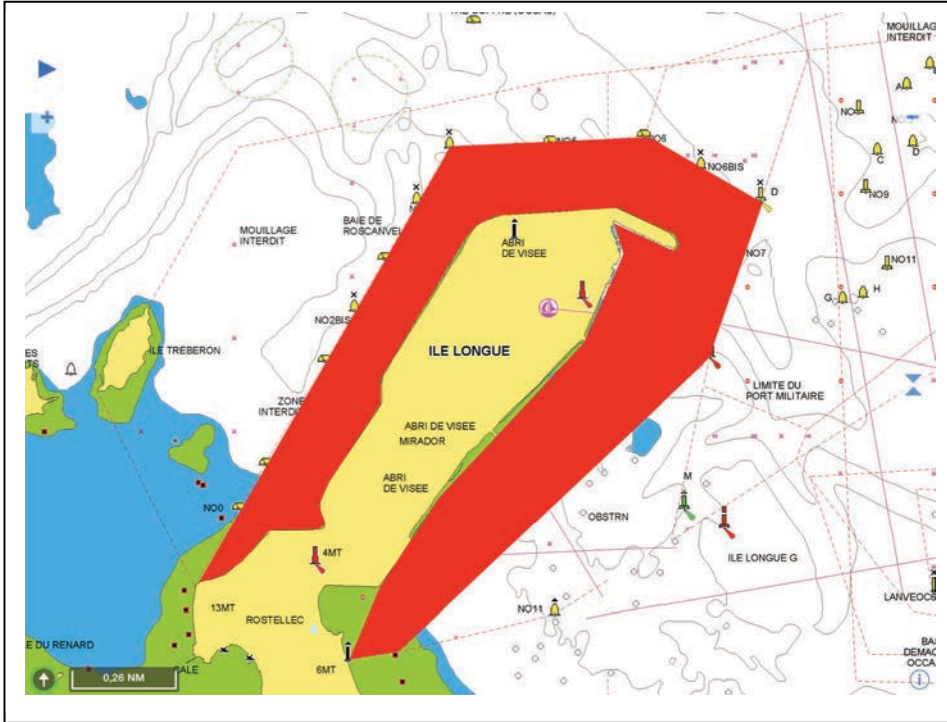
ADDENDUM 1

RACE AERA



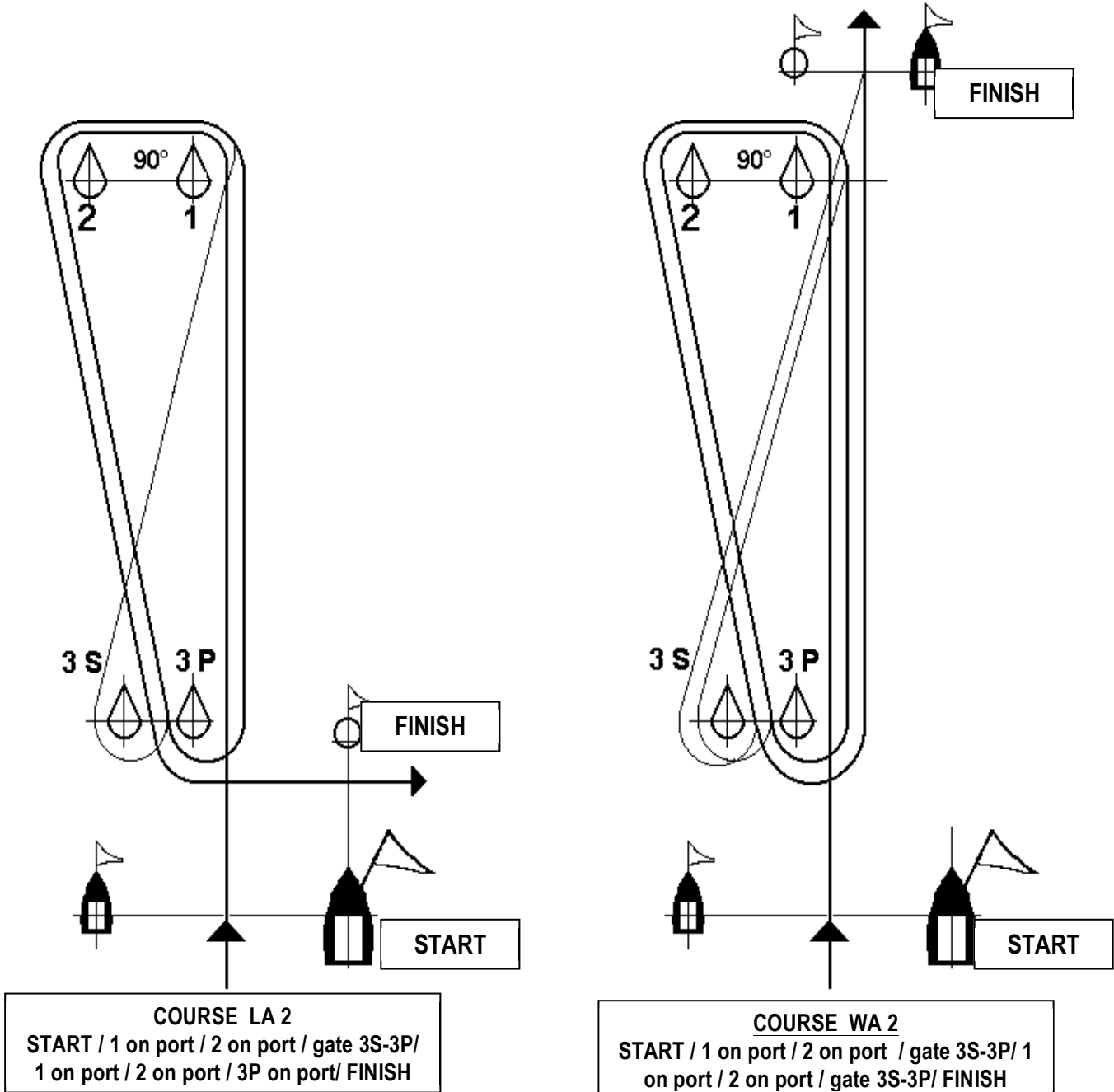


FORBIDDEN AREAS



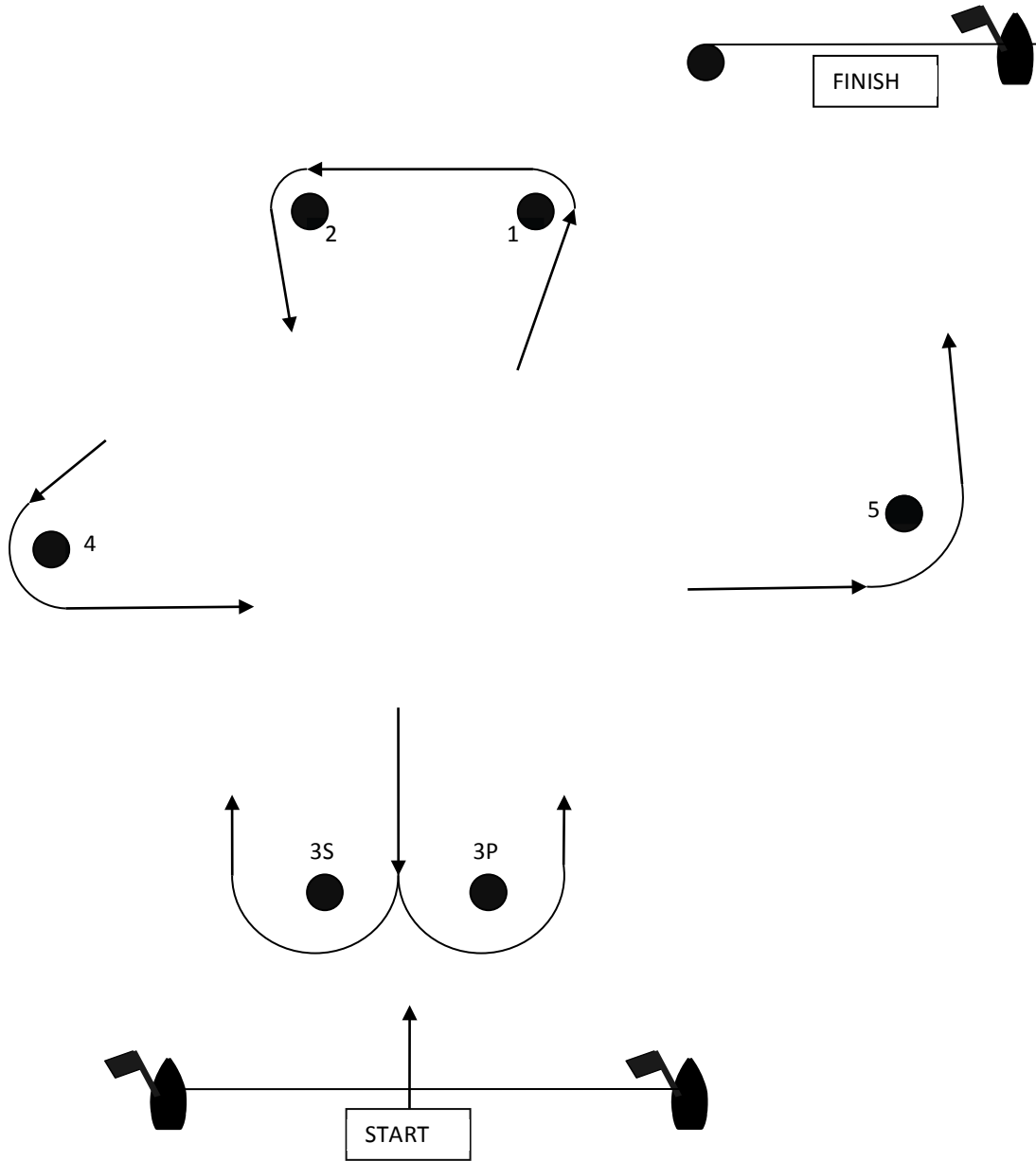
ADDENDUM 2

ILLUSTRATING THE COURSE
SHORT RACES





39TH microclass FRANCE
MICROCUP BREST 2015
 7 to 14 AUGUST 2015
 SOCIETE DES REGATES DE BREST
 BREST – France



COURSE E 2
 START / 1 on port / 2 on port / gate 3S-3P/ 1 on port / 2 on port / 4 on port / 5 on port / FINISH





microclass FRANCE
39TH MICRO CUP BREST 2015
7 to 14 AUGUST 2015
SOCIETE DES REGATES DE BREST
BREST – France



ADDENDUM 3 - ILLUSTRATING THE COURSE - LONG DISTANCE

The coordinates of the marks are given as an indication and cannot be ground for a protest or a request for redress.

MARKS	TYPE	POSITION
Starting Area		048°21'47,2" N / 004°27'13,7" W
OFFSET MARK	<i>INFLATABLE RED</i>	
Basse PENOUEPE	<i>Lateral Red</i>	48°21'27.0" N / 004°30'31.2" W
R2	<i>Lateral Red</i>	48°22'00.9" N / 004°28'44.5" W
R3	<i>Cardinal South</i>	48°22'28.8" N / 004°27'21.4" W
KERALIOU	<i>Lateral Green</i>	48°23'06.3" N / 004°24'56.2" W
GPD Atlantique	<i>Mark special Yellow</i>	048°21'14,4" N / 004°27'40,6" W
Basse du RENARD	<i>Cardinal WEST</i>	48°19'46.4" N / 004°29'02.8" W
Ile Ronde	<i>Island / Virtual Point</i>	048°19'21,7" N / 004°27'49,9" W
LANVEOC 1	<i>Lateral Green</i>	48°19'04.3" N / 004°28'40.4" W
LANVEOC 4	<i>Lateral Red</i>	48°17'55.2" N / 004°28'29.3" W
PEN AR VIR	<i>Cardinal NORTH</i>	48°17'45.4" N / 004°24'52.9" W
Bouée Aulne 4	<i>Lateral Red</i>	48°18'23.3" N / 004°22'09.4" W
Bouée Aulne 1	<i>Lateral Green</i>	48°18'36.0" N / 004°18'53.5" W
Passe Sud	<i>Between Military Harbour Kay South on port and "Port du chateau" Kay Est on starboard</i>	48°22'07.6" N / 004°29'20.8" W
Finishing line	<i>Between Port du Chateau on Port and Kay South on starboard</i>	48°22'38.7" N / 004°29'06.1" W





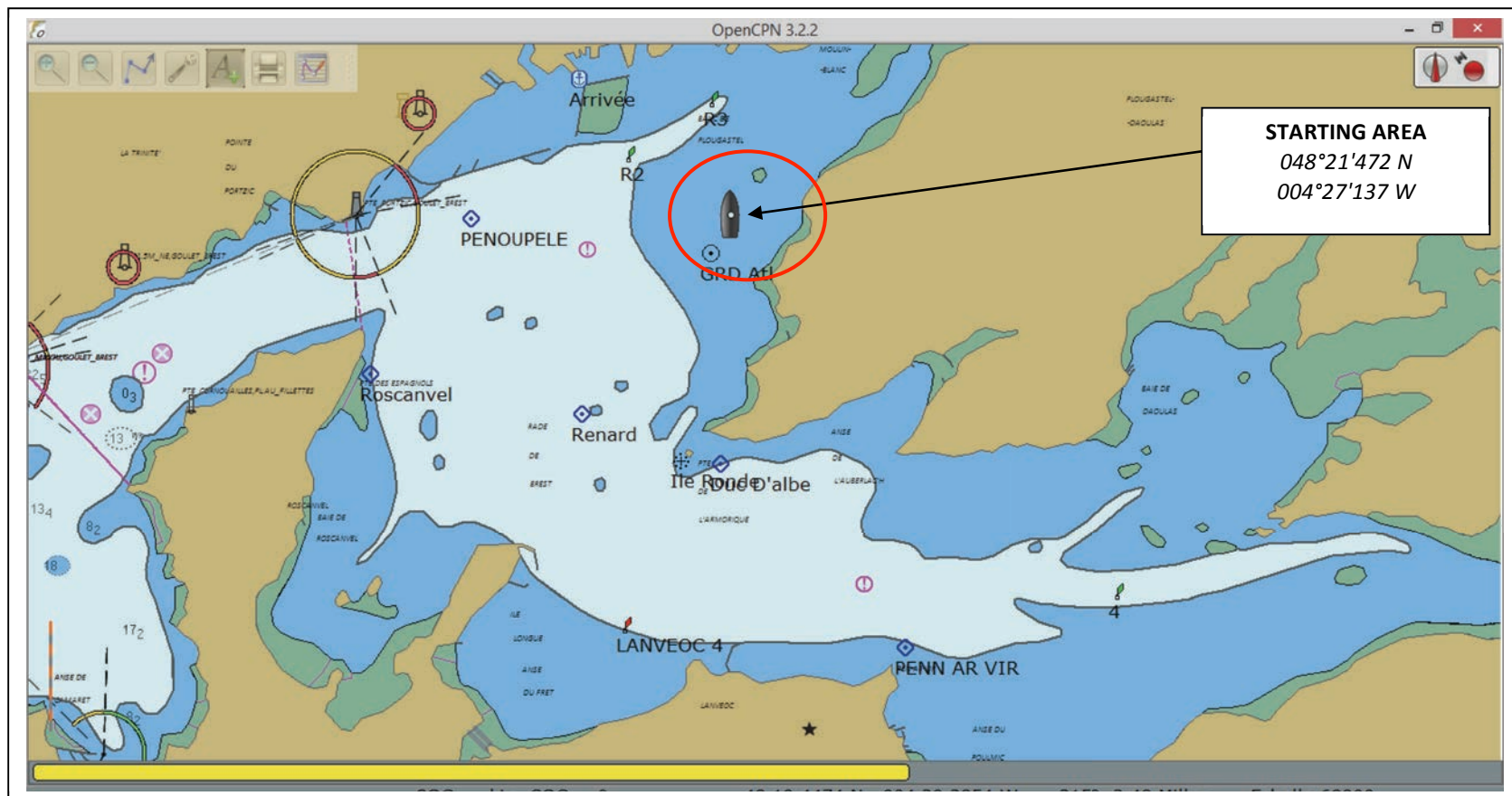
7 to 14 AUGUST 2015

SOCIETE DES REGATES DE BREST

BREST - France



ADDENDUM 3 - ILLUSTRATING THE COURSE - LONG DISTANCE



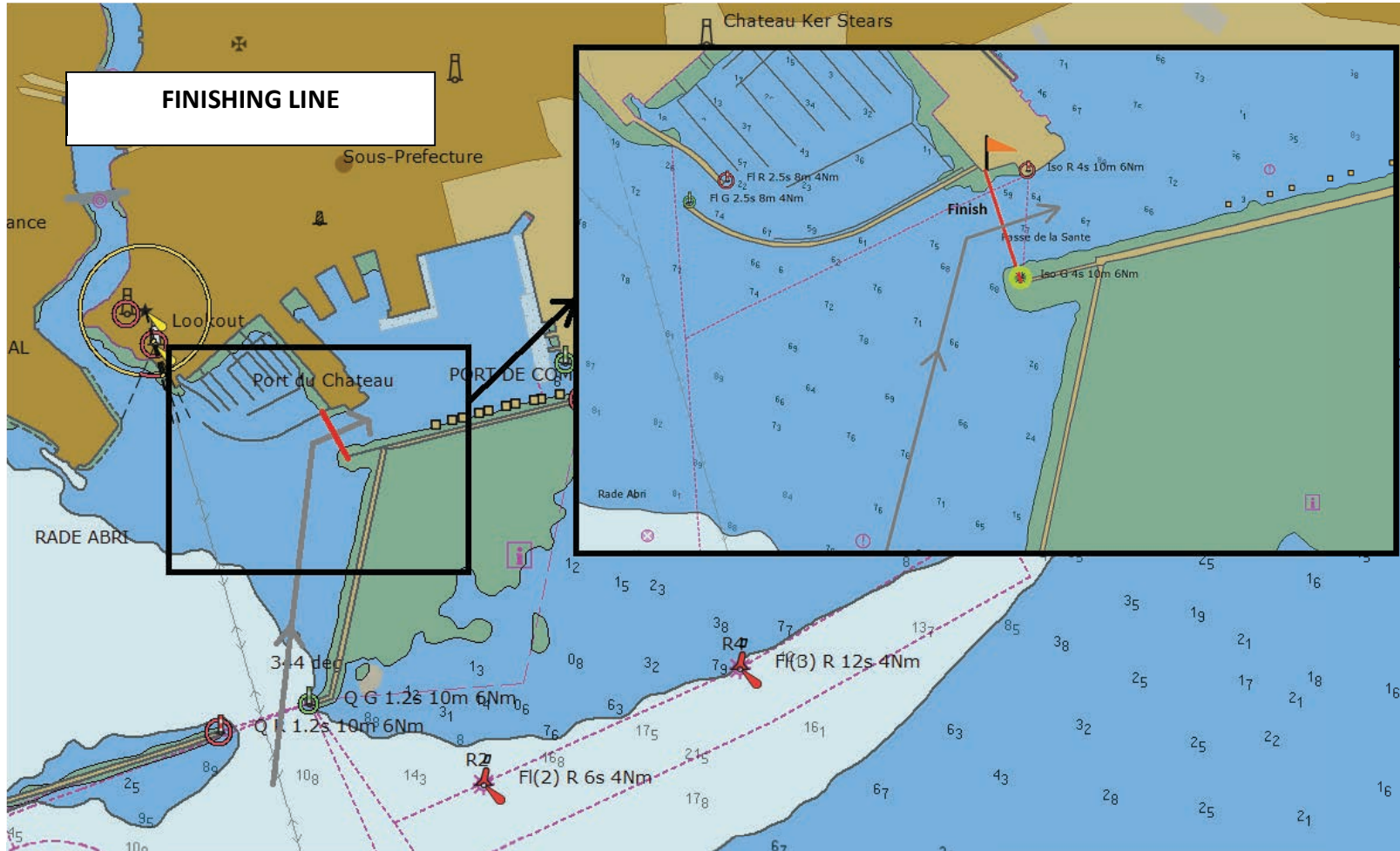


39TH **microclass** FRANCE
MICROCUP BREST 2015

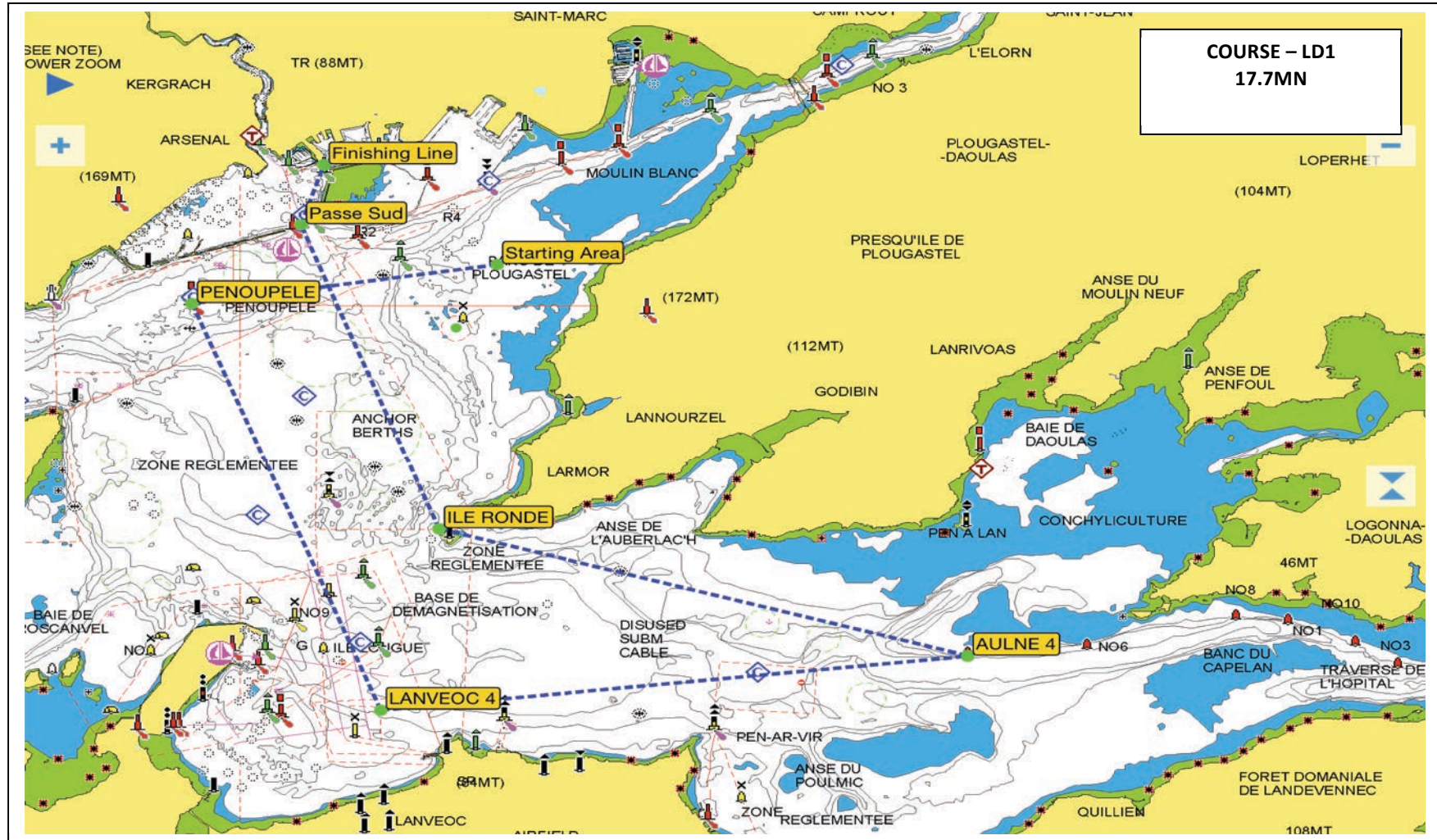
7 to 14 AUGUST 2015

SOCIETE DES REGATES DE BREST

BREST – France



ADDENDUM 3 - ILLUSTRATING THE COURSE - LONG DISTANCE



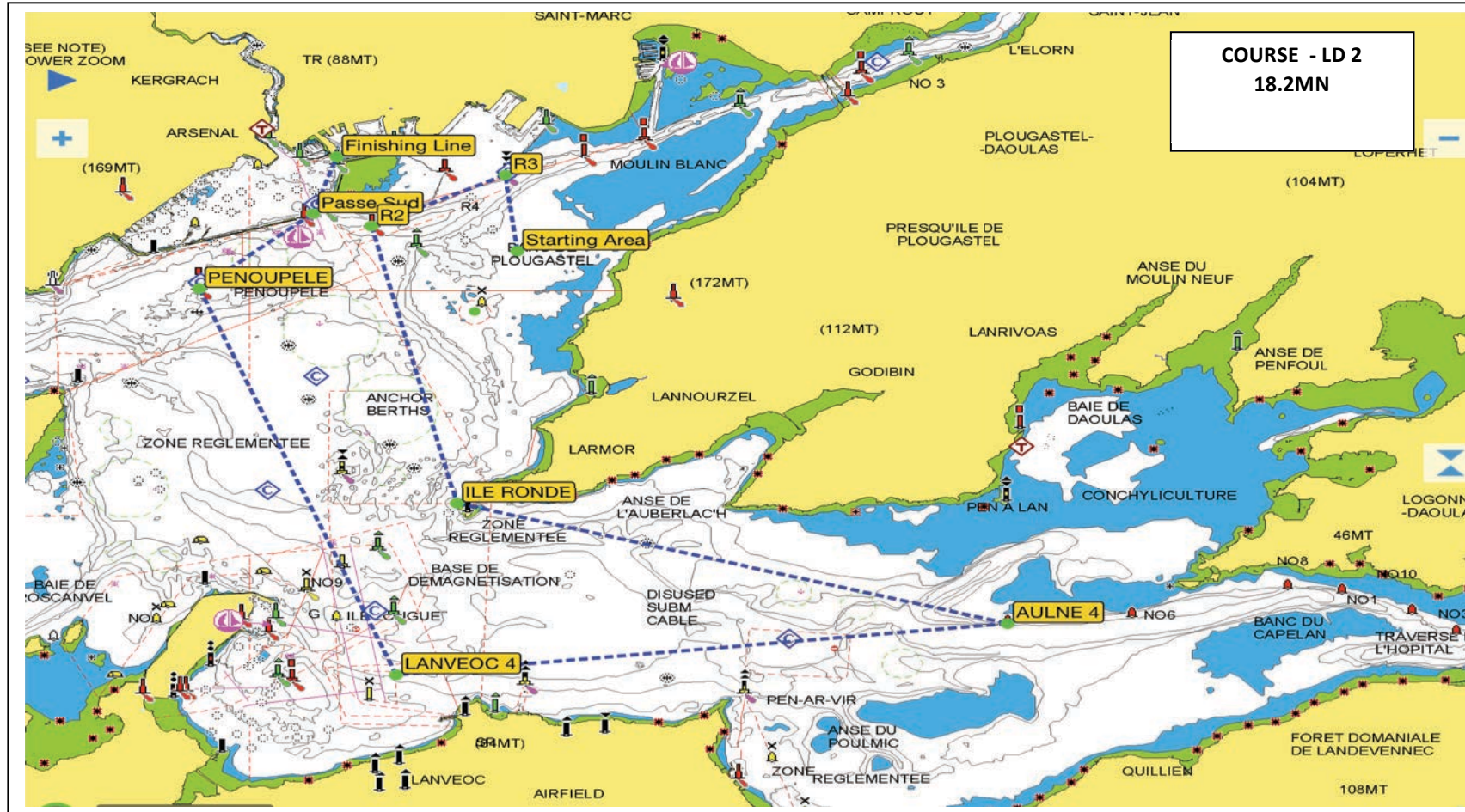


39TH **microclass** FRANCE
MICROCUP BREST 2015

7 to 14 AUGUST 2015

SOCIETE DES REGATES DE BREST

BREST - France



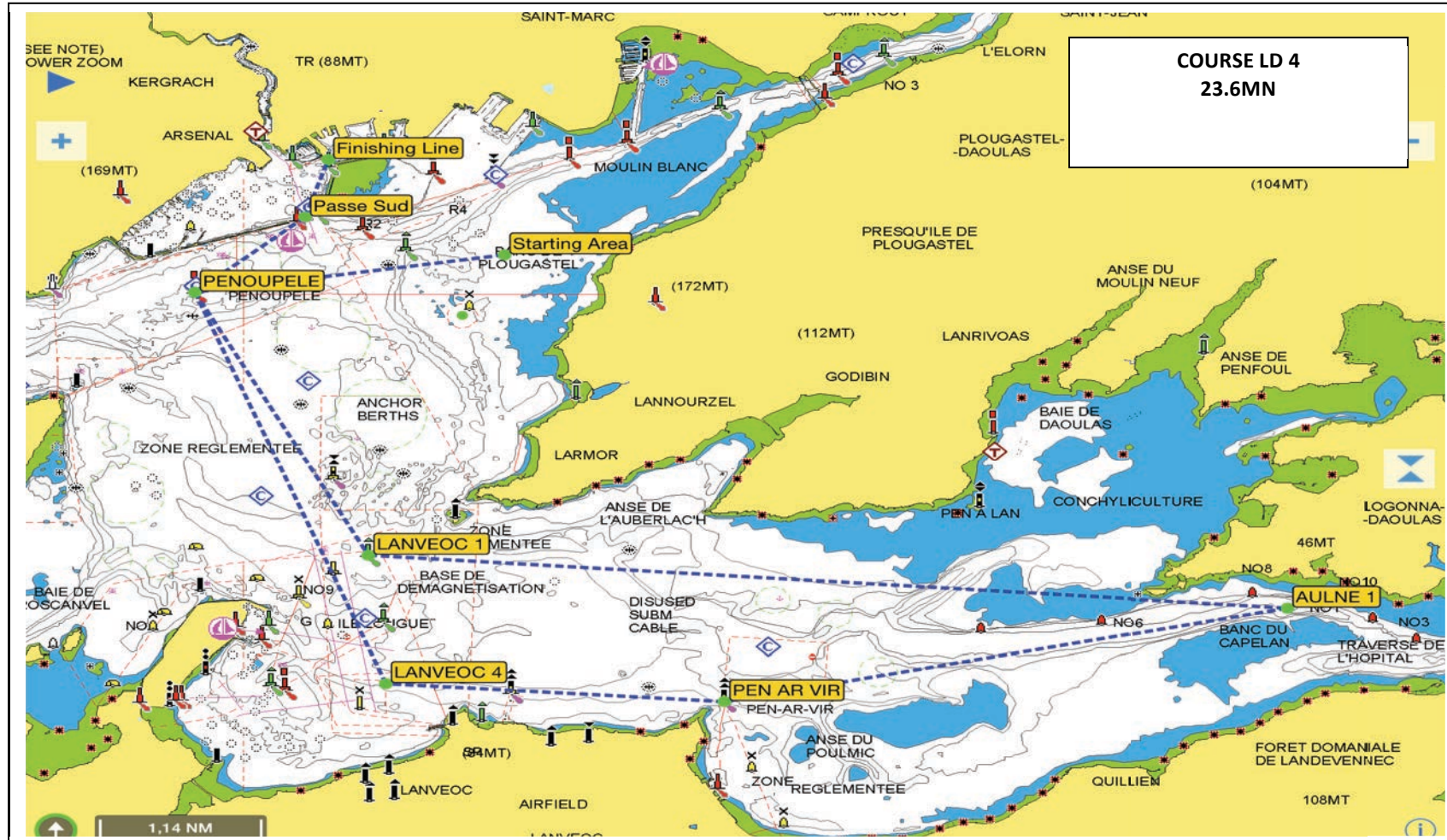


microclass FRANCE
39TH MICROCUP BREST 2015

7 to 14 AUGUST 2015

SOCIETE DES REGATES DE BREST

BREST - France

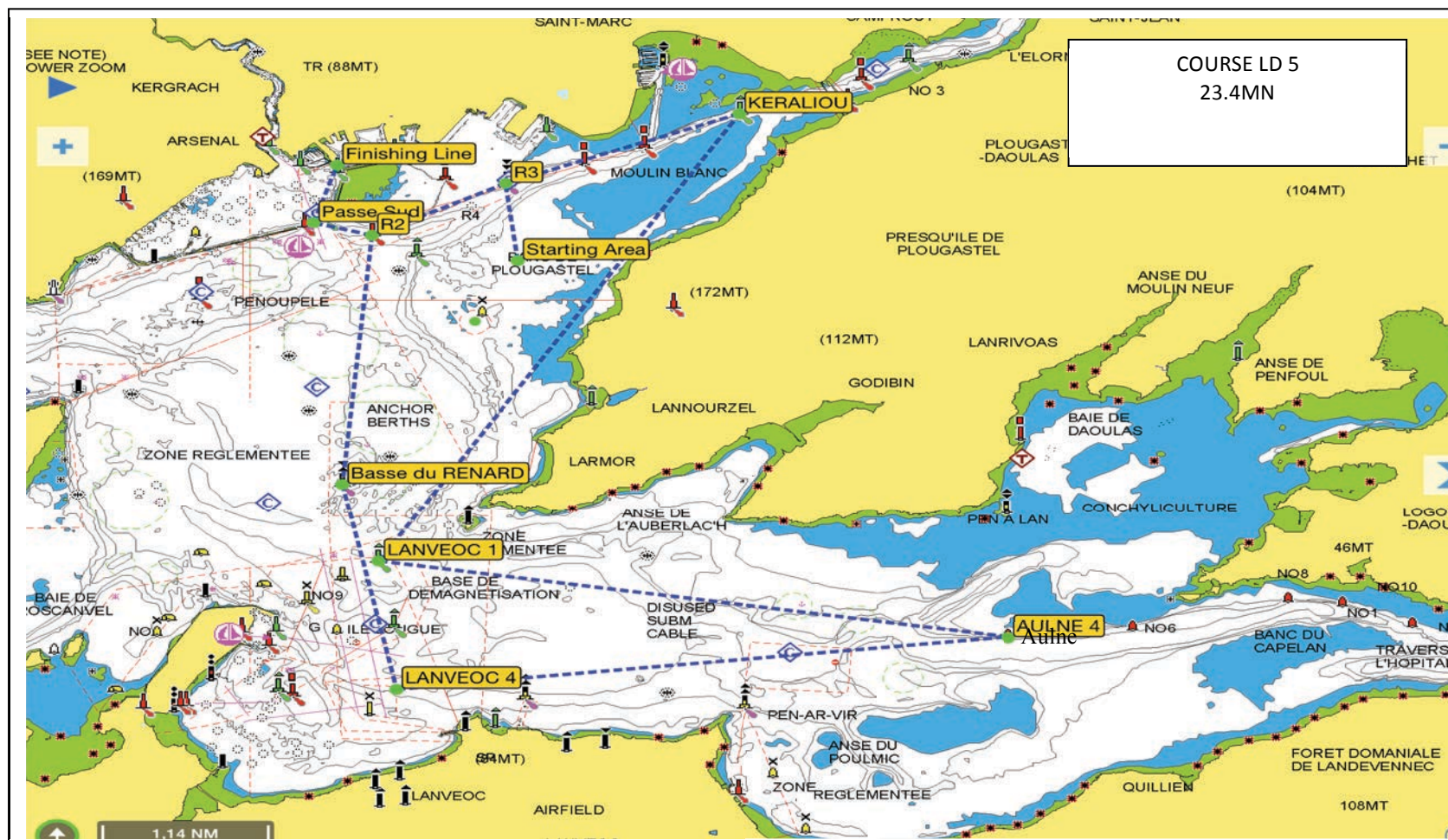




39TH **microclass** FRANCE
MICROCUP BREST 2015

7 to 14 AUGUST 2015

SOCIETE DES REGATES DE BREST
BREST - France



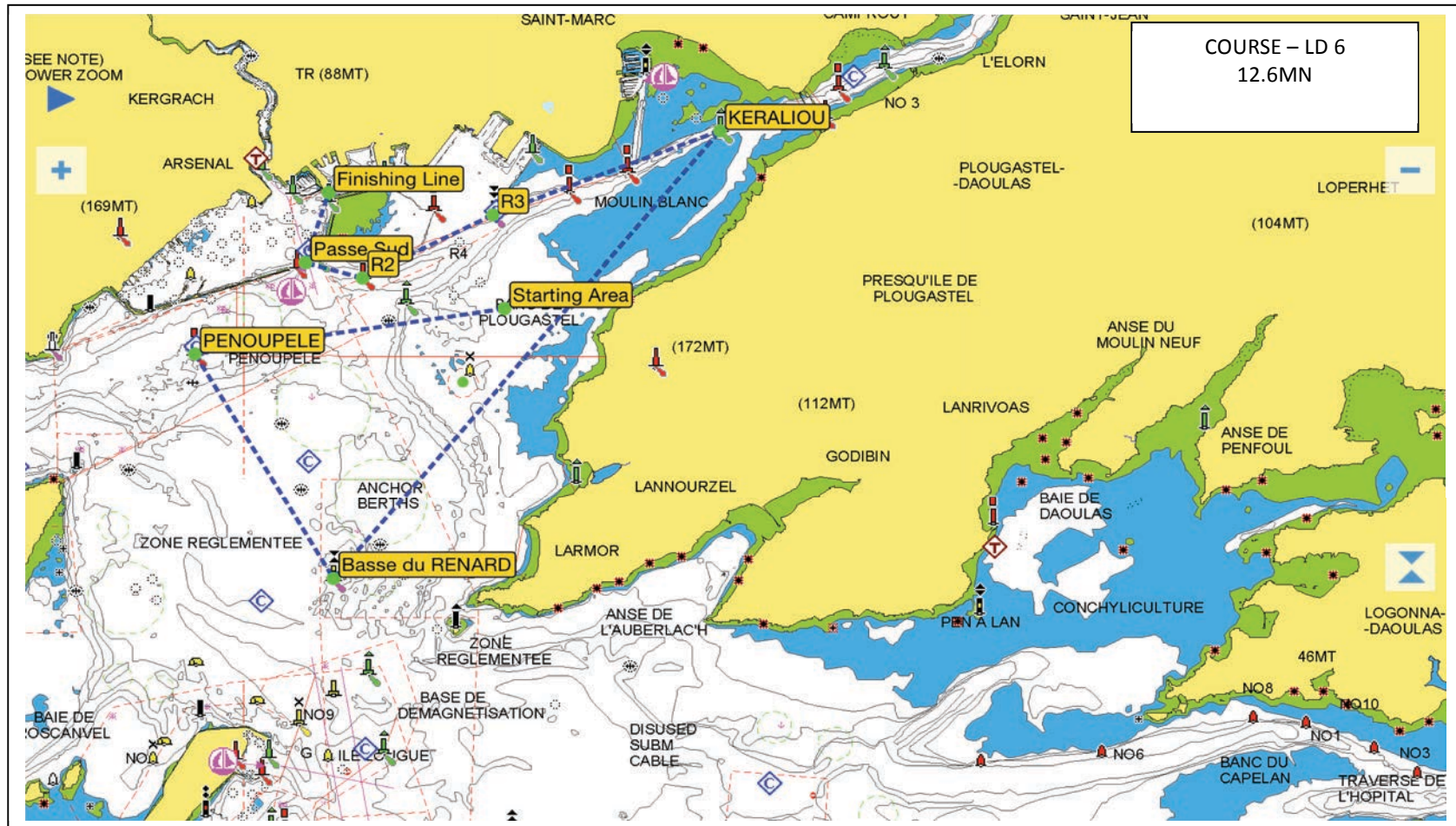


39TH **microclass** FRANCE
MICROCUP BREST 2015

7 to 14 AUGUST 2015

SOCIETE DES REGATES DE BREST

BREST – France

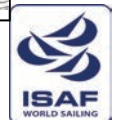
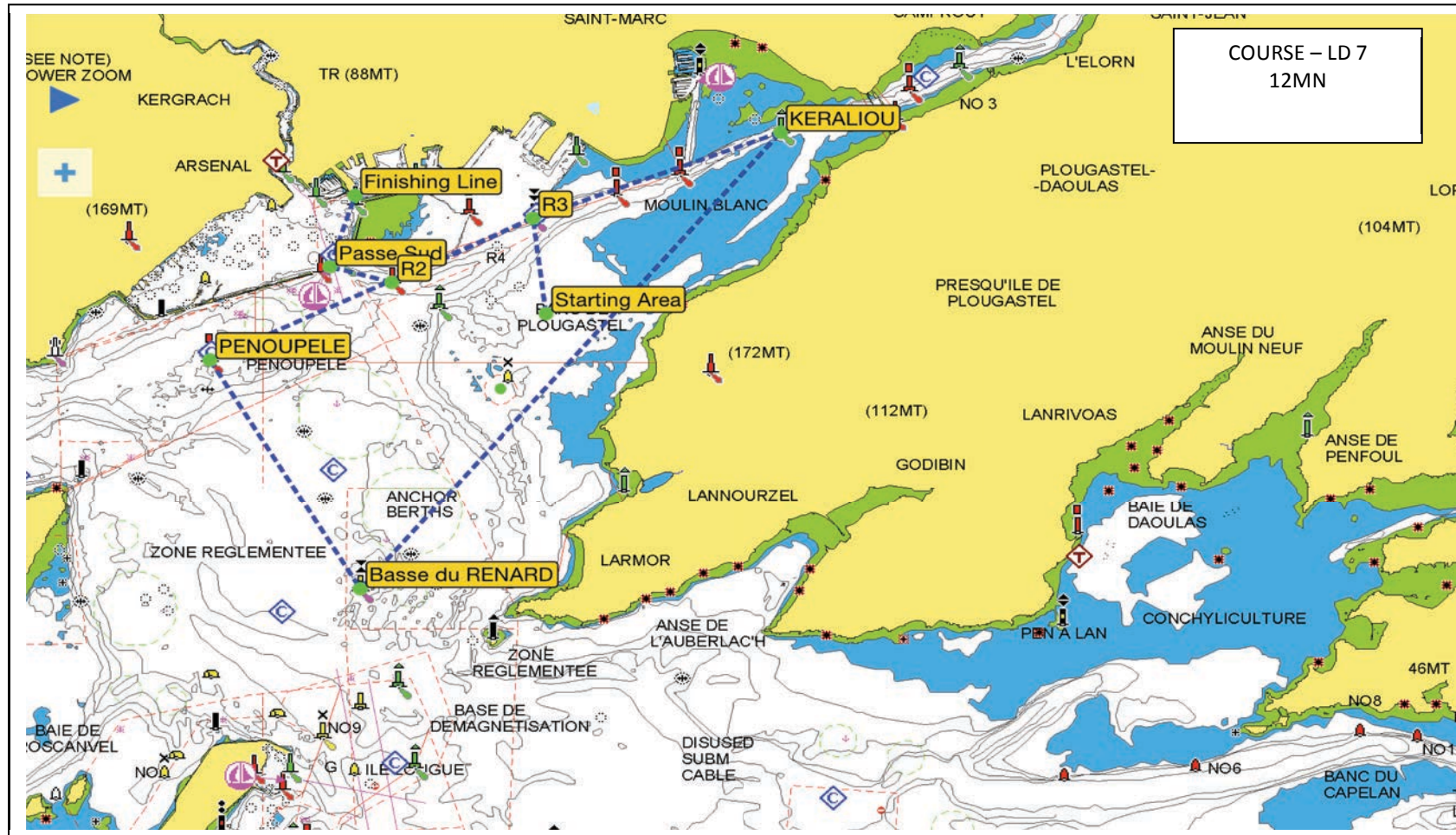




39TH **microclass** FRANCE
MICROCUP BREST 2015

7 to 14 AUGUST 2015

SOCIETE DES REGATES DE BREST
 BREST – France





COURSE DESCRIPTION – Marks Order and required sides

COURSE / DISTANCE	MARKS		<u>REQUIRED SIDE</u>
LD 1 / 17.7MN	- Start		Sailing Instruction 11
	- Offset Mark		Sailing Instruction 8.2
	- Penoupele	To be rounded	On Port
	- LANVEOC 4	To be rounded	On Port
	- Aulne 4	To be rounded	On Port
	- Ile Ronde	To be left	On Starboard
	- Passe Sud		
	- Finish		

COURSE / DISTANCE	MARKS		<u>REQUIRED SIDE</u>
LD 2 / 18.7MN	- Start		Sailing Instruction 11
	- Offset Mark		Sailing Instruction 8.2
	- R3	To be rounded	On Port
	- R2	To be rounded	On Port
	- Ile Ronde	To left	On Port
	- Aulne 4	To be rounded	On Starboard
	- LANVEOC 4	To be rounded	On Starboard
	- Penoupele	To be rounded	On Starboard
	- Passe Sud		
	- Finish		



COURSE / DISTANCE	MARKS		<i>REQUIRED SIDE</i>
LD 3 / 23.5MN	- Start		Sailing Instruction 11
	- Offset Mark		Sailing Instruction 8.2
	- Lanveoc 4	To be rounded	On Port
	- Aulne 4	To be rounded	On Port
	- Ile Ronde	To be left	On Starboard
	- Basse Renard	To be left	On Starboard
	- Penoupele	To be rounded	On Starboard
	- GPD Atlantique	To be rounded	On Port
	- Keraliou	To be rounded	On Port
	- R3	To be left	On Starboard
	- R2	To be left	On Starboard
	- Passe Sud		
	- Finish		

COURSE / DISTANCE	MARKS		<i>REQUIRED SIDE</i>
LD 4 / 23.6MN	- Start		Sailing Instruction 11
	- Offset Mark		Sailing Instruction 8.2
	- Penoupele	To be rounded	On Port
	- LANVEOC 1	To be rounded	On port
	- Aulne N°1	To be rounded	On Starboard
	- Penn ar Vir	To be left	On Starboard
	- LANVEOC 4	To be rounded	On Starboard
	- Penoupele	To be rounded	On Starboard
	- Passe Sud		
	- Finish		




39TH MICRO CUP BREST 2015
7 to 14 AUGUST 2015
SOCIETE DES REGATES DE BREST
BREST – France



COURSE / DISTANCE	MARKS		<u>REQUIRED SIDE</u>
LD 5 / 23.5MN	- Start		Sailing Instruction 11
	- Offset Mark		Sailing Instruction 8.2
	- R3	To be rounded	On Port
	- R2	To be rounded	On Port
	- Basse RENARD	To be left	On Port
	- LANVEOC 4	To be rounded	On Port
	- Aulne 4	To be rounded	On Port
	- LANVEOC 1	To be rounded	On Starboard
	- KERALIOU	To be rounded	On Port
	- R3	To be left	On Starboard
	- R2	To be left	On Starboard
	- Passe Sud		
	- Finish		

COURSE / DISTANCE	MARKS		<u>REQUIRED SIDE</u>
LD 6 / 12.6MN	- Start		Sailing Instruction 11
	- Offset Mark		Sailing Instruction 8.2
	- Penoupele	To be rounded	On Port
	- Basse Renard	To be rounded	On Port
	- Keraliou	To be rounded	On Port
	- R3	To be left	On Starboard
	- R2	To be left	On Starboard
	- Passe Sud		
	- Finish		





 **microclass FRANCE**
39TH MICRO CUP BREST 2015
7 to 14 AUGUST 2015
SOCIETE DES REGATES DE BREST
BREST – France



COURSE / DISTANCE	MARKS		<u>REQUIRED SIDE</u>
LD 7 / 12MN	- Start		Sailing Instruction 11
	- Offset Mark		Sailing Instruction 8.2
	- R3	To be rounded	On Port
	- Penoupele	To be rounded	On Port
	- Basse Renard	To be rounded	On Port
	- Keraliou	To be rounded	On Port
	- R3	To be left	On Starboard
	- R2	To be left	On Starboard
	- Passe Sud		
	- Finish		

