



SOCIETE DES REGATES A VOILE D'ANNECY

SAILING INSTRUCTIONS

MICRO CLASS WORLD CHAMPIONSHIPS 2017





MICRO CLASS WORLD CHAMPIONSHIPS - ANNECY 2017

SAILING INSTRUCTIONS

[DP] denotes a rule for which the penalty is at the discretion of the International Jury;

[SP] denotes a rule for which a standard penalty may be applied by the race committee without a hearing or a discretionary penalty applied by the International Jury with a hearing;

[NP] denotes a rule that shall not be grounds for protests by a boat. This changes RRS 60.1(a).

1 RULES

- 1.1 The regatta will be governed by the rules as defined in The Racing Rules of Sailing (RRS),
- 1.2 The Federation Française de Voile prescriptions that apply are stated in full in NOR
- 1.3 If there is a conflict between languages the English text will take precedence.

2 NOTICES TO COMPETITORS

Notices to competitors will be posted on the official notice board located at the Club House.

3 CHANGES TO SAILING INSTRUCTIONS

Any change to the sailing instructions will be posted before 09:00 am on the day it will take effect, except that any change to the schedule of races will be posted by 21:00 on the day before it will take effect. This change NOR 7.4.

4 SIGNALS MADE ASHORE

- 4.1 Official signals made ashore will be displayed at the mast located on the Club House 1st floor.
- 4.2 When flag AP is displayed ashore, '1 minute' is replaced with 'not less than 45 minutes' in the race signal AP.
- 4.3 [DP] [NP] When flag "AP over H" is displayed ashore, the boats shall not leave the harbor.
- 4.4 When flag Y is displayed ashore, rule 40 applies at all times while afloat. This changes the Part 4 preamble.

5 SCHEDULE OF RACES

5.1 Practice Race:

Monday, August 21st – Warning signal: 11:00 - 1 Race

5.2 Racing Program

Monday, August 21st – Warning signal: 14:00 – Races to follow

Tuesday, August 22nd – Warning signal: 11:00 – Races to follow

Wednesday, August 23rd – Warning signal: 11:00 – Races to follow

Thursday, August 24th – Warning signal: 11:00 – Races to follow

Friday, August 25th – Warning signal: 11:00 – Races to follow

- 5.3 After a long postponement, to alert boats that a race or sequence of races will begin soon, an orange flag will be displayed with one sound for at least five minutes before a warning signal is displayed.

- 5.4 on the last day of the regatta no warning signal will be made after 15:30

6 CLASS FLAGS

Class flag will be the MICROCLASS Flag

7 RACING AREAS

Addendum 1 shows the location of the racing area.

8 THE COURSES

- 8.1 The diagrams in Addendum 2 (short race) and 3 (long distance) show the courses, including the approximate angles between legs, the order in which marks are to be passed, and the side on which each mark is to be rounded.



MICRO CLASS WORLD CHAMPIONSHIPS - ANNECY 2017

8.2 No later than the warning signal, the race committee signal boat will display a board indicating the course and the approximate compass bearing of the first leg.

8.3 Long Distance Race

No later than the warning signal, if the course includes an offset mark, the race committee will display flag D. displaying a green flag together with flag D means that the offset mark is to be rounded and left on starboard. No green flag means that the offset mark is to be rounded and left on port (this changes Race signals). **No flag means that there is no Offset Mark ("D" Mark)**

9 MARKS

9.1 Short Race

Marks 1, 2, 3 will be INFLATABLE WHITE "VILLE D'ANNECY" buoys.

9.2 Long Distance Race –

- a. Offset Mark "D" will be INFLATABLE WHITE "VILLE D'ANNECY" buoy.
- b. The marks are shown in ADDENDUM 3

9.3 New mark, as provided in sailing instruction 11.1, will be INFLATABLE RED buoy.

9.4 Finish mark – FP - will be INFLATABLE BLUE buoy.

9.5 A race committee boat signalling a change of a leg of the course is a mark as provided in Sailing Instruction 11.4.

10 THE START

10.1 Races will be started by using RRS 26.

10.2 The starting line will be between staffs displaying an orange flag on two Race Committee Boats (SS / SP)

10.3 [SP] A boat that does not start within 4 minutes after her starting signal will be scored Did Not Start (DNS) without a hearing. This changes RRS A4 and A5.

11 CHANGE TO THE NEXT LEG OF THE COURSE

11.1 To change the next leg of the course, the race committee will lay a new mark (or move the finishing line) and remove the original mark as soon as practicable. When in a subsequent change a new mark is replaced, it will be replaced by an original mark.

11.2 Short Race

When changing the windward mark (1 and 2), a new windward mark 1 will be placed without mark 2.

11.3 Except at a gate, boats shall pass between the race committee boat signalling the change of the next leg and the nearby mark, leaving the mark to port and the race committee boat to starboard. This changes RRS 28.

11.4 Long Distance Race

If a race committee boat staying close to a mark to be rounded displays:

Flag "C" together with a board "FINISH", boats shall go directly to the finish, ignoring the required side of the marks that have been neutralized. (This changes RRS 28 and 33)

12 THE FINISH

The finishing line will be between a staff displaying an orange flag on the Race Committee Boat (SS) and the finishing mark (FP).



MICRO CLASS WORLD CHAMPIONSHIPS - ANNECY 2017

13 PENALTY SYSTEM

- 13.1 The rule 44.1 and P2.1 are changed so that the Two-Turns Penalty is replaced by the One-Turn Penalty.
- 13.2 Appendix P will apply as changed by sailing instruction 13.1

14 TIME LIMITS AND TARGET TIMES

Time limits and target times are as follows:

a. SHORT RACES

<u>Short Races</u>		
<u>Time Limit</u>	<u>Mark 1 Time limit</u>	<u>Target time</u>
90 minutes	30 minutes	60 minutes

If no boat has passed Mark 1 within the Mark 1 time limit, the race will be abandoned. Failure to meet the target time will not be grounds for redress. This changes the rule 62.1(a).

[SP] Boats failing to finish within 30 minutes after the first boat sails the course and finishes will be scored Did Not Finish (DNF) without a hearing. This changes RRS 35, A4 and A5.

b. LONG DISTANCE RACES

Time Limit: Finish for the first boat no later than sunset

Sunset Time

Monday, 21st	Tuesday, 22nd	Wednesday, 23rd	Tuesday, 24th	Friday, 25th
20:33	20:31	20:29	20:28	20:26

[SP] Boats, failing to finish within 2 hours after the first boat sails the course and finishes or 30 minutes after the sunset, will be scored Did Not Finish (DNF) without a hearing. This changes RRS 35, A4 and A5.

15 PROTESTS AND REQUESTS FOR REDRESS

- 15.1 When protesting about an incident in the racing area, a boat shall display the red flag as described in RRS 61.1(a). This changes RRS 61.1(a)(2).
- 15.2 Protest forms are available at the race office, located at the CLUB HOUSE. Protests and requests for redress or reopening shall be delivered there within the appropriate time limit.
- 15.3 The protest time limit is 60 minutes after the last boat has finished the last race of the day.
- 15.4 Notices will be posted no later than 30 minutes after the protest time limit to inform competitors of hearings in which they are parties or named as witnesses. Hearings will be held in the protest room, located at the CLUB HOUSE, beginning at the time posted.
- 15.5 Notices of protests by the race committee or International Jury will be posted to inform boats under RRS 61.1(b).
- 15.6 A list of boats that, under sailing instruction 13.2, have been penalized for breaking RRS 42 will be posted.
- 15.7 Breaches of sailing instructions marked [NP] and RRS 55 will not be grounds for a protest by a boat. This changes the rule 60.1(a). Penalties for breaches of sailing instructions marked [DP] or breaches of Class Rules may be less than disqualification (DSQ) if the jury so decides. The scoring abbreviation for a discretionary penalty imposed under this instruction will be DP.



MICRO CLASS WORLD CHAMPIONSHIPS - ANNECY 2017

- 15.8 On the last scheduled day of racing a request for reopening a hearing shall be delivered
- (a) Within the protest time limit if the requesting party was informed of the decision on the previous day;
 - (b) No later than 30 minutes after the requesting party was informed of the decision on that day.
- This changes the RRS 66.
- 15.9 On the last scheduled day of racing a request for redress based on a International Jury decision shall be delivered no later than 30 minutes after the decision was posted. This changes the RRS 62.2.
- 15.10 Decisions of the International Jury will be final as provided in RRS 70.5.
- 16 SCORING
- 16.1 3 races are required to be completed to constitute a series.
- 16.2 A maximum of 13 races, including the long distance race, are scheduled.
- 16.3 (a) When fewer than 4 races have been completed, a boat's series score will be the total of her race scores.
- (b) When from 4 to 8 races have been completed, a boat's series score will be the total of her race scores excluding her worst score.
- (c) When 9 or more races have been completed, a boat's series score will be the total of her race scores excluding her two worst scores.
- 16.4 Ties in a series score between boats shall be broken in favour of the boat that scored better in long distance race. This changes RRS Appendix A8. If the long distance race has not been raced or validated, ties will be broken according to RRS Appendix A8.
- 17 [DP] [NP] SAFETY REGULATIONS
- 17.1 On arrival in the racing area each day, each boat shall sail past the stern of the race committee signal boat on starboard tack and hail her sail or bow number until acknowledged by the race committee.
- 17.2 A boat that retires from racing shall notify the race committee before leaving the racing area, or if that is not possible, shall notify the race office as soon as possible after returning ashore.
- 17.3 Boats retiring from racing in accordance with SI 17.2 shall complete a retirement declaration form at the race office before the protest time limit.
- 17.4 When berthed, boats shall be kept in their assigned places in the harbour
- 17.5 The Class Rule 04.08.05 may apply. To apply, the Race Committee will use the following signals :
- a - When flag "F" with sound signals is displayed ashore, the Class Rule 04.08.05 applies as soon as possible when the boats leave the harbour
 - b - When flag "F" with sound signals is displayed on the starting boat before the warning signal, the Class Rule 04.08.05 applies no later than the preparatory signal,
 - c - When flag "F" with sound signals is displayed near a mark, the Class Rule 04.08.05 applies from that mark,
 - d - When flag "D" with sound signals is displayed at a mark , the Class Rule 04.08.05 no longer applies from this mark.
- 18 [DP] [NP] REPLACEMENT OF CREW OR EQUIPMENT
- 18.1 Substitution of competitors will not be allowed without prior written approval of the International Jury
- 18.2 Substitution of damaged or lost equipment will not be allowed unless authorized by the Technical Committee. Requests for substitution shall be made to the Technical Committee at the first reasonable opportunity.
- 19 [DP] [NP] EQUIPMENT AND MEASUREMENT CHECKS
- A boat or equipment may be inspected at any time for compliance with the class rules and sailing instructions. On the water, a boat can be instructed by a member of the race committee or the technical committee to proceed immediately to a designated area for inspection.



MICRO CLASS WORLD CHAMPIONSHIPS - ANNECY 2017

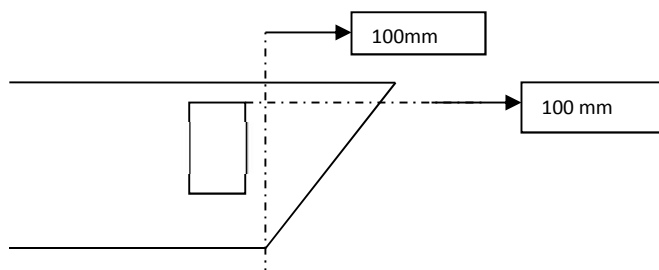
20 [DP][NP] ADVERTISING

Boats are required to display the advertising that will be provided by the Organizing Authority and shall be fixed in accordance with the following instructions:

Stickers, provided by the Organising Authority, shall be placed on hull sides as follows:

Not more than 100mm from the deck

Not more than 100mm from the bow imaginary line as described below:



21 OFFICIAL BOATS

Official boats will be marked as follows: YELLOW PENNANT OR YELLOW STICKERS

Jury boat: yellow flag with letter "JURY".

22 [DP] SUPPORT BOATS

1. Team leaders, Coaches and other support personnel may use "support craft" to assist their competitors on the water. They shall register at the regatta office before the deadline, providing details on their boats and distinctive identification which shall include flying a White flag showing the national 3 letter code in black of the MNA.
2. Team leader, coaches and other support boats shall stay more than 150 meters to leeward of the starting line and from the leeward marks and from any racing MICRO from the time of the preparatory signal until all boats have finished the last race of the day, or all races are abandoned.
Any physical contact between support boat and competitors are forbidden (except emergency) during this time.
3. Details regarding the conduct of these support boats will be indicated in ADDENDUM 4.

23 [DP] [NP] TRASH DISPOSAL

Boats shall not put trash in the water. Trash may be placed aboard support and race committee boats.

24 [DP] [NP] HAUL-OUT RESTRICTIONS

Boats shall not be hauled out during the regatta except with and according to the terms of prior written permission of the race committee.

25 [DP] [NP] DIVING EQUIPMENT AND PLASTIC POOLS

Underwater breathing apparatus and plastic pools or their equivalent shall not be used around all boats between the preparatory signal of the first race and the end of the regatta.

26 [DP] [NP] RADIO COMMUNICATIONS

Except in an emergency, a boat that is racing shall not make voice or data transmissions and shall not receive voice or data communication that is not available to all boats.



MICRO CLASS WORLD CHAMPIONSHIPS - ANNECY 2017

27 PRIZES

The General ranking winner will be declared the MICRO CLASS 2017 WORLD CHAMPION

Prizes for the 1st, 2nd and 3rd on General

Prizes for the 1st, 2nd and 3rd in Racer Division,

Prizes for the 1st, 2nd and 3rd in Cruiser Division

Prizes for the 1st, 2nd and 3rd in Origin Division

28 DISCLAIMER OF LIABILITY

Competitors participate in the regatta entirely at their own risk. See RRS 4, Decision to Race. The organizing authority will not accept any liability for material damage or personal injury or death sustained in conjunction with or prior to, during, or after the regatta.

29 INSURANCE

Each participating boat shall be insured with valid third-party liability insurance with a minimum cover of 1 500 000 € per incident or the equivalent.

30 RIGHT TO USE NAME AND LIKENESS

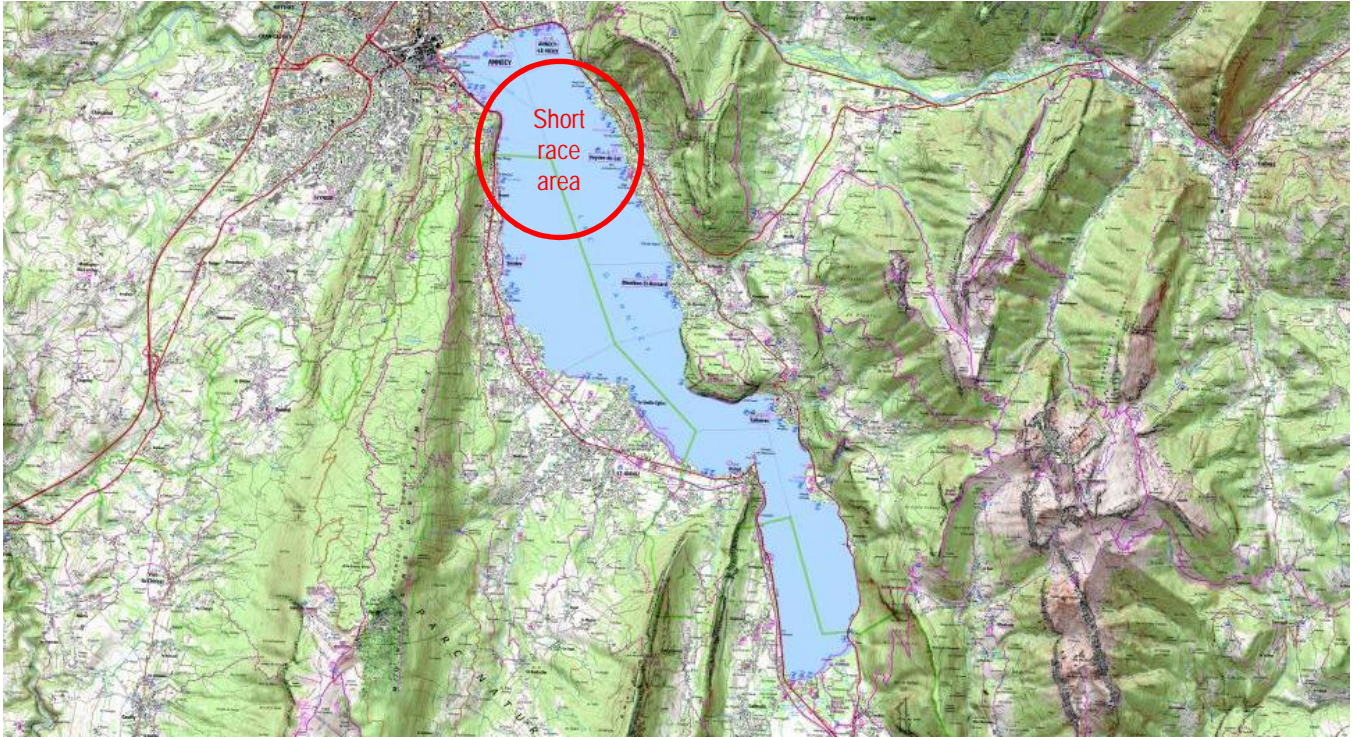
By participating in the MICRO CLASS WORLD CHAMPIONSHIP – 41th MICRO CUP, competitors automatically grant to the Organizing Authority and the event sponsors the right, in perpetuity, to make, use and show, at their discretion, any photography, audio, and video recording, or other reproductions of them made at the venue or on the water from the time of their arrival at the venue until their final departure, without compensation.



MICRO CLASS WORLD CHAMPIONSHIPS - ANNECY 2017

ADDENDUM 1

RACING AREA - SHORT RACE



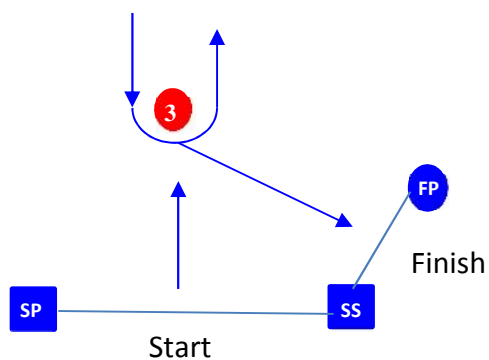
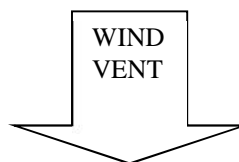
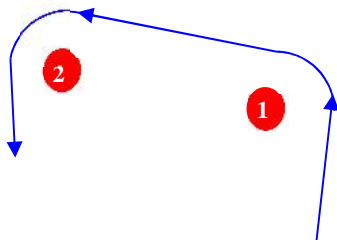


MICRO CLASS WORLD CHAMPIONSHIPS - ANNECY 2017

ADDENDUM 2

ILLUSTRATING THE COURSE
SHORT RACES

LR



<u>COURSE WINDWARD /LEEWARD + REACHING</u>	
SIGNAL	Mark Rounding Order / Ordre de passage
<u>LR 1</u>	Start – 1 – 2 – 3 – Finish
<u>LR 2</u>	Start – 1 – 2 – 3 – 1 – 2 – 3 - Finish
<u>LR 3</u>	Start – 1 – 2 – 3 – 1 – 2 – 3 - 1 – 2 – 3 - Finish
<u>LR 4</u>	Start – 1 – 2 – 3 – 1 – 2 – 3 - 1 – 2 – 3 - - 1 – 2 – 3 Finish

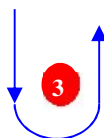
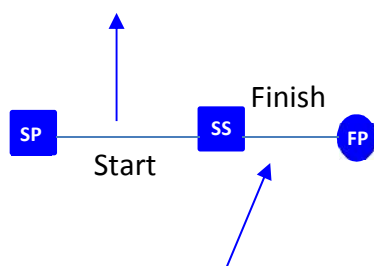
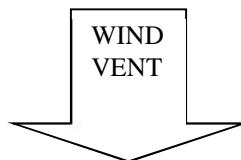
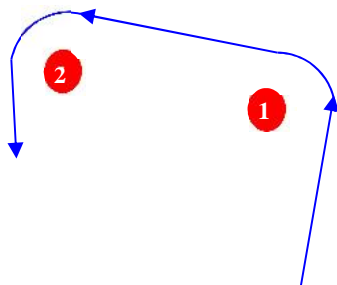


MICRO CLASS WORLD CHAMPIONSHIPS - ANNECY 2017

ADDENDUM 2

ILLUSTRATING THE COURSE
SHORT RACES

L



COURSE WINDWARD /LEEWARD	
SIGNAL	Mark Rounding Order / Ordre de passage
<u>L1</u>	Start – 1 – 2 – 3 - Finish
<u>L2</u>	Start – 1 – 2 – 3 – 1 – 2 – 3 - Finish
<u>L3</u>	Start – 1 – 2 – 3 – 1 – 2 – 3 - 1 – 2 – 3 - Finish
<u>L4</u>	Start – 1 – 2 – 3 – 1 – 2 – 3 - 1 – 2 – 3 - - 1 – 2 – 3 Finish

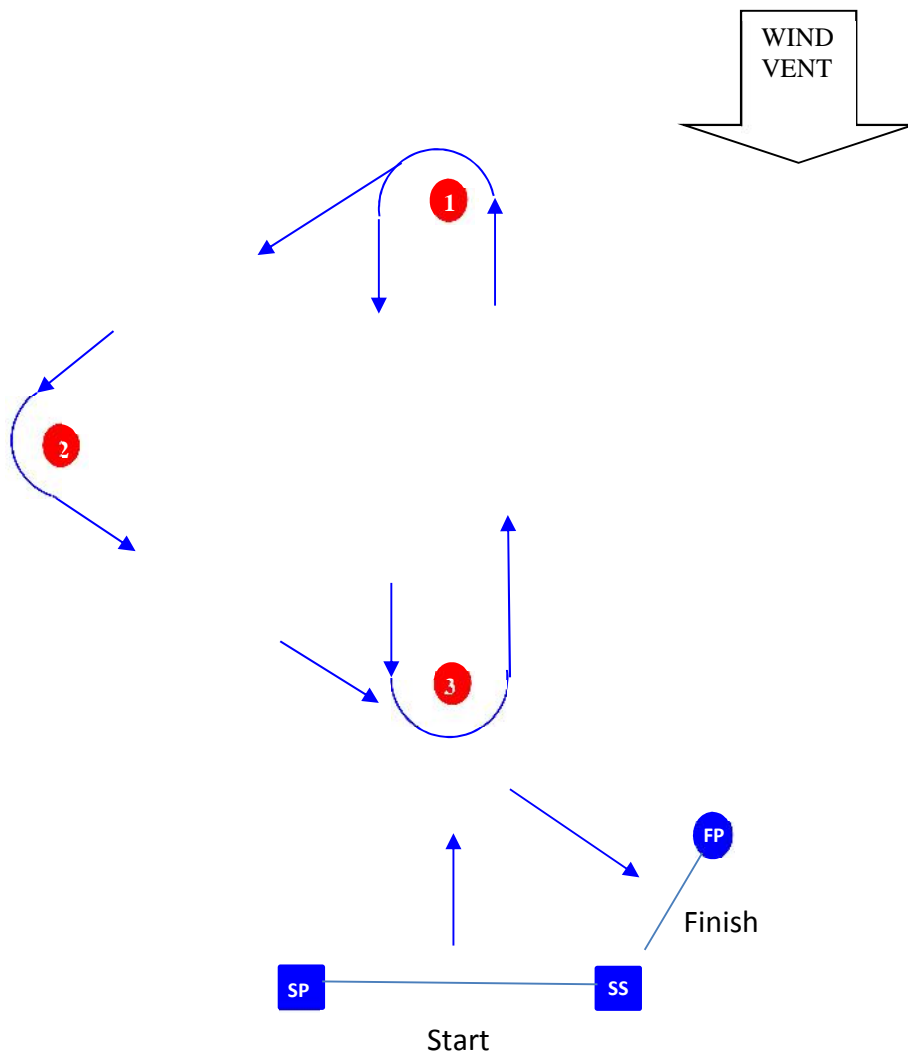


MICRO CLASS WORLD CHAMPIONSHIPS - ANNECY 2017

ADDENDUM 2

ILLUSTRATING THE COURSE
SHORT RACES

TR



COURSE TRIANGULAR + REACHING	
SIGNAL	Mark Rounding Order / Ordre de passage
<u>TR 1</u>	Start – 1 – 2 – 3 – Finish
<u>TR 2</u>	Start – 1 – 2 – 3 – 1 – 3 - Finish
<u>TR 3</u>	Start – 1 – 2 – 3 – 1 - 3 - 1 – 3 - Finish
<u>TR 4</u>	Start – 1 – 2 – 3 – 1 – 3 - 1 – 3 - 1 – 3 Finish

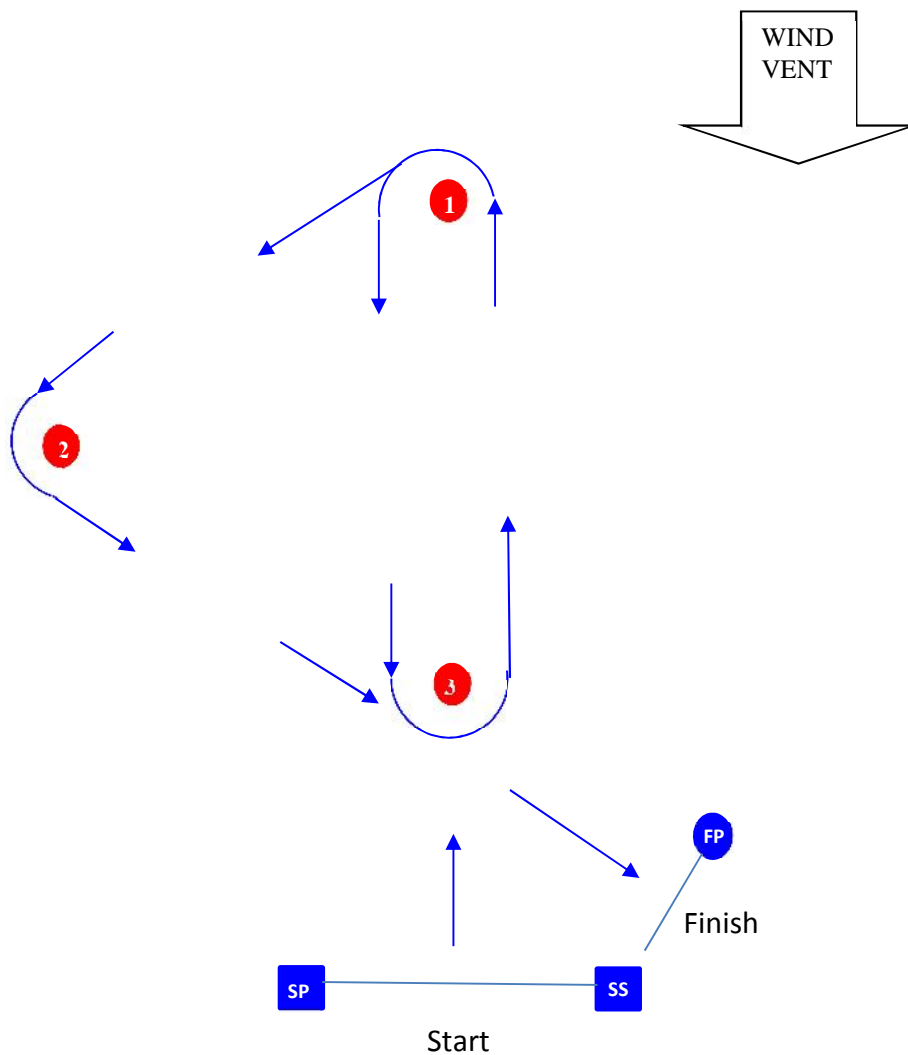


MICRO CLASS WORLD CHAMPIONSHIPS - ANNECY 2017

ADDENDUM 2

ILLUSTRATING THE COURSE
SHORT RACES

STR



COURSE SUPER TRIANGULAR + REACHING	
SIGNAL	Mark Rounding Order / Ordre de passage
<u>STR 2</u>	Start - 1 - 3 - 1 - 2 - 3 - Finish
<u>STR 3</u>	Start - 1 - 2 - 3 - 1 - 3 - 1 - 2 - 3 - Finish
<u>STR 4</u>	Start - 1 - 2 - 3 - 1 - 3 - 1 - 2 - 3 - 1 - 3 - Finish

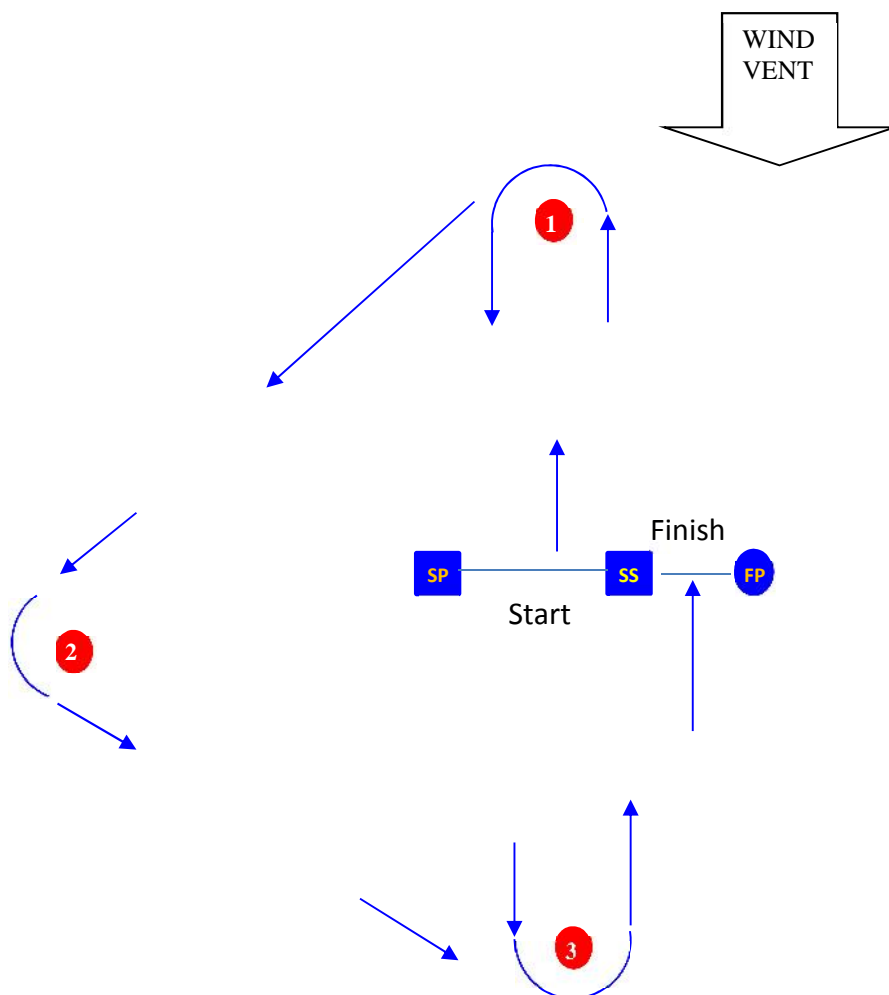


MICRO CLASS WORLD CHAMPIONSHIPS - ANNECY 2017

ADDENDUM 2

ILLUSTRATING THE COURSE
SHORT RACES

T



COURSE TRIANGULAR + WINDWARD LEEWARD	
SIGNAL	Mark Rounding Order / Ordre de passage
<u>T 1</u>	Start – 1 – 2 – 3 – Finish
<u>T 2</u>	Start – 1 – 2 – 3 – 1 – 3 – Finish
<u>T 3</u>	Start – 1 – 2 – 3 – 1 – 3 – 1 – 3 – Finish
<u>T 4</u>	Start – 1 – 2 – 3 – 1 – 3 – 1 – 3 – 1 – 3 – Finish

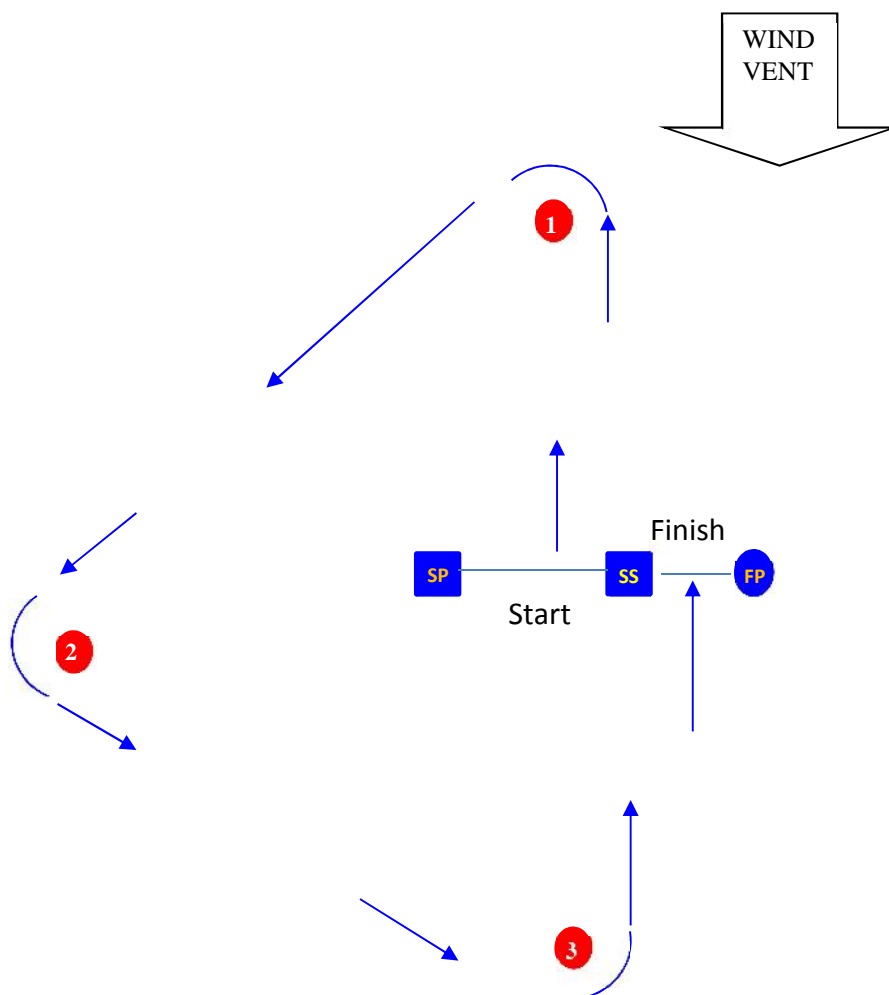


MICRO CLASS WORLD CHAMPIONSHIPS - ANNECY 2017

ADDENDUM 2

ILLUSTRATING THE COURSE
SHORT RACES

ST



COURSE SUPER TRIANGULAR	
SIGNAL	Mark Rounding Order / Ordre de passage
<u>ST 1</u>	Start – 1 – 2 – 3 – Finish
<u>ST 2</u>	Start – 1 – 2 – 3 – 1 – 2 – 3 – Finish
<u>ST 3</u>	Start – 1 – 2 – 3 – 1 – 2 – 3 – 1 – 2 – 3 – Finish
<u>ST 4</u>	Start – 1 – 2 – 3 – 1 – 2 – 3 – 1 – 2 – 3 – 1 – 2 – 3 – 1 – 2 – 3 – Finish



MICRO CLASS WORLD CHAMPIONSHIPS - ANNECY 2017

APPENDIX 3

ILLUSTRATING THE COURSE LONG DISTANCE RACES

The coordinates of the marks are given as an indication and cannot be ground for a protest or a request for redress.



LONG DISTANCE RACES – MARKS

Offset MARK – White "VILLE D'ANNECY" buoy

- N° 0 – Yellow buoy - 45°53'32" N 6°09'24" E
- N° 3 – Yellow buoy - 45°53'49" N 6°08'23" E
- N° 5 – Yellow buoy - 45°50'50" N 6°10'17" E
- N° 8 – Yellow buoy - 45°53'01" N 6°10'10" E
- N° 6 – Yellow buoy - 45°47'44" N 6°13'03" E
- N° 9 – Yellow buoy - 45°51'36" N 6°10'10" E

ROSELET – 45°50'02" N 6°12'22" E

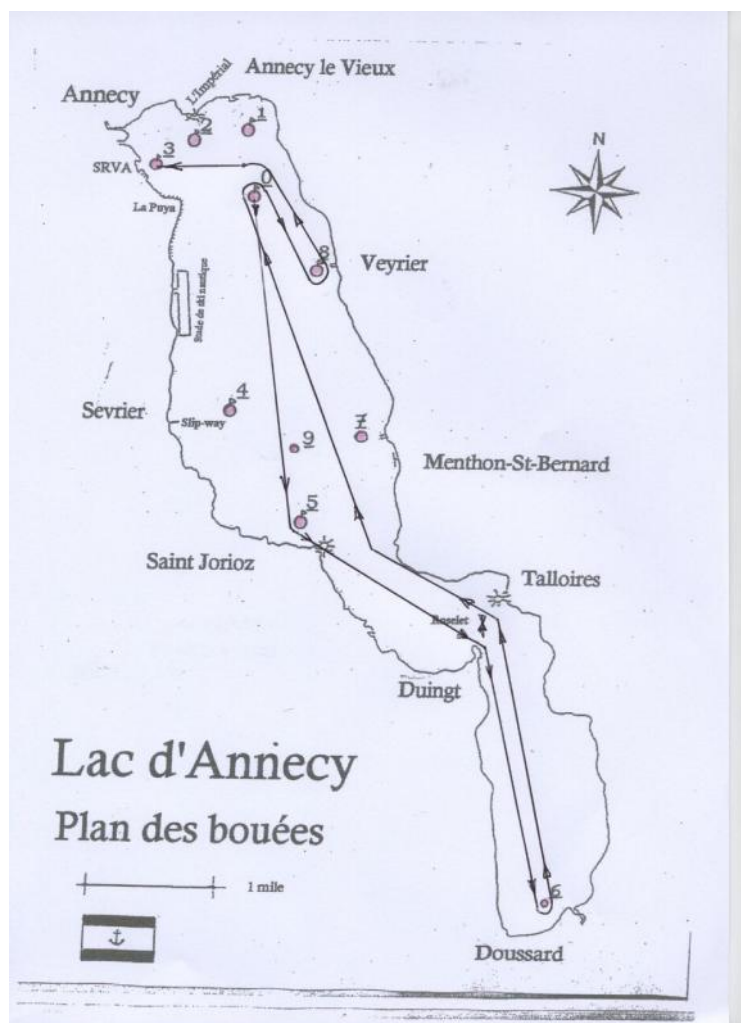
The ROSELET is a shoal materialized by a mast surmounted by 2 triangles opposite by the summit. 4 yellow conical buoys indicate the limit of the shoal, they must be bypassed by the outside (inside this 4 buoys it's an exclusion area)

Le ROSELET est un haut-fond matérialisé par un espar surmonté par 2 triangles opposés par le sommet. 4 bouées coniques jaunes indiquent la limite du haut-fond, elles doivent être contournées par l'extérieur de ces bouées jaunes. (L'intérieur de ces marques constitue une zone d'exclusion)



MICRO CLASS WORLD CHAMPIONSHIPS - ANNECY 2017

ILLUSTRATING THE COURSE - LONG DISTANCE RACES
COURSE - LD 1



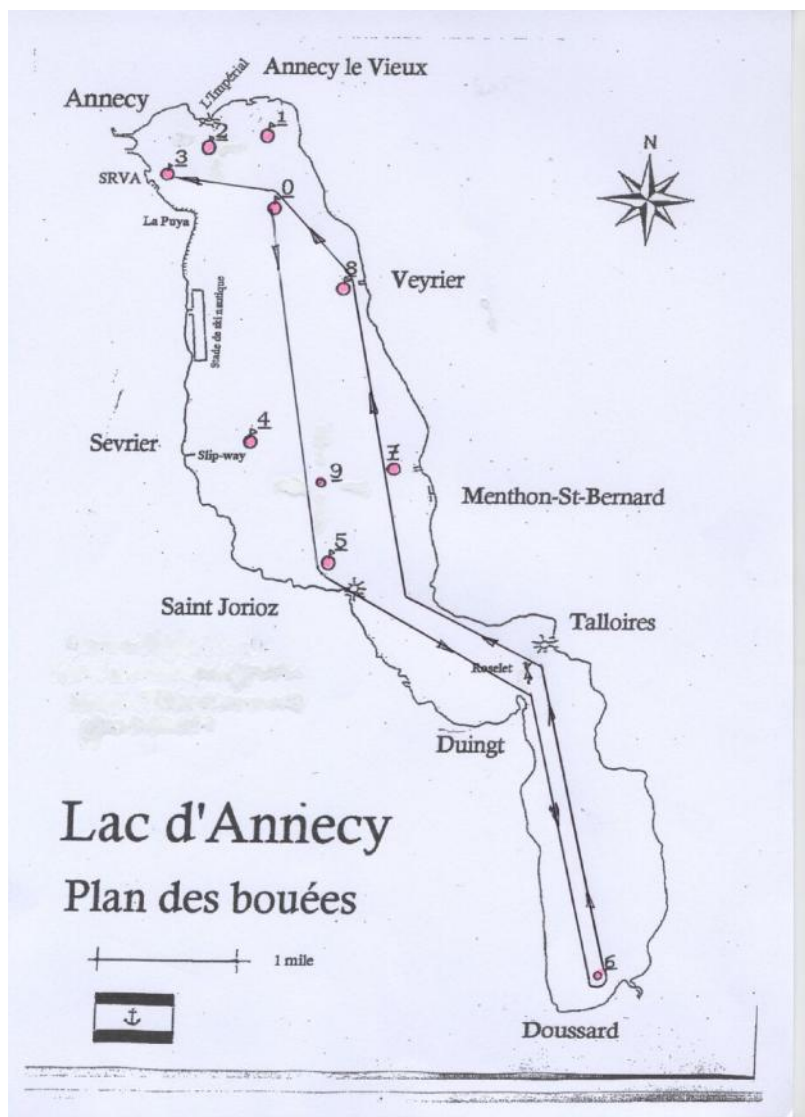
COURSE / DISTANCE	MARKS	<i>REQUIRED SIDE</i>
LD 1 18nm	- STARTING LINE Located approximately in the area of the mark 0	
	- OFFSET MARK - Sailing Instruction 8.3	
	- MARK 5	ON PORT
	- ROSELET	ON PORT
	- MARK 6	ON PORT
	- ROSELET	ON PORT
	- MARK 0	ON STARBOARD
	- MARK 8	ON PORT
	- MARK 0	ON PORT
	- FINISHING LINE Located approximately in the area of the mark 3	



MICRO CLASS WORLD CHAMPIONSHIPS - ANNECY 2017

ILLUSTRATING THE COURSE - LONG DISTANCE RACES

COURSE – LD 2

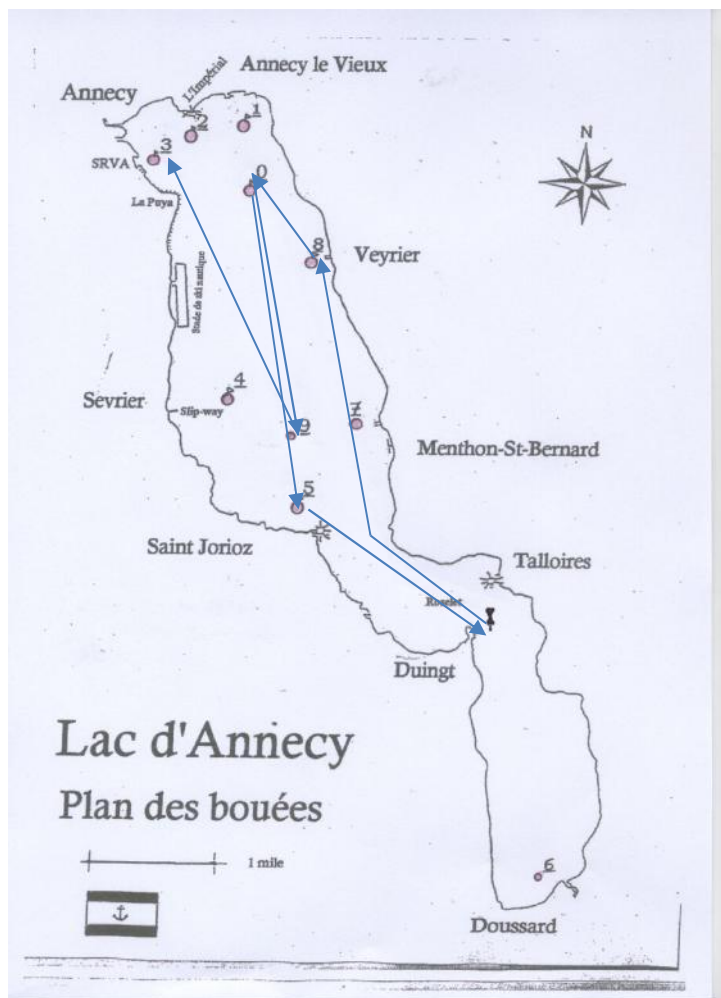


COURSE / DISTANCE	MARKS	<u>REQUIRED SIDE</u>
LD 2 16.5nm	- STARTING LINE Located approximately in the area of the mark 0	
	- OFFSET MARK – Sailing Instruction 8.3	
	- MARK 5	ON PORT
	- ROSELET	ON PORT
	- MARK 6	ON PORT
	- ROSELET	ON PORT
	- MARK 8	ON PORT
	- MARK 0	ON PORT
	- FINISHING LINE Located approximately in the area of the mark 3	



MICRO CLASS WORLD CHAMPIONSHIPS - ANNECY 2017

ILLUSTRATING THE COURSE - LONG DISTANCE RACES
COURSE - LD 3

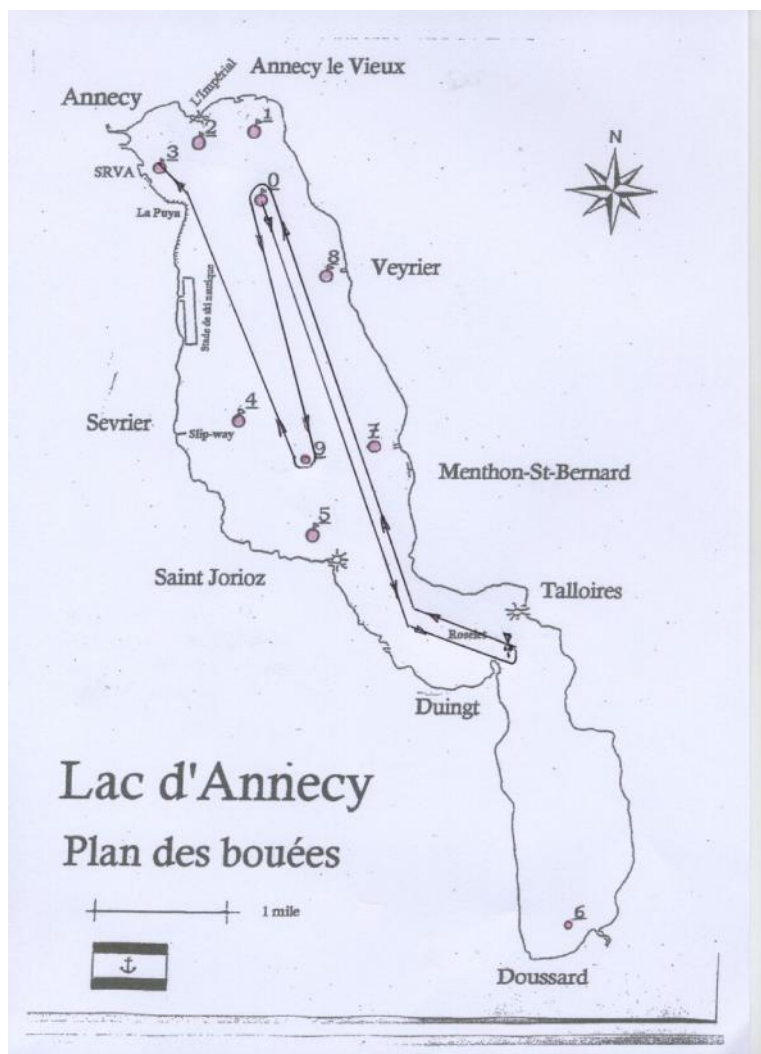


COURSE / DISTANCE	MARKS	<u>REQUIRED SIDE</u>
LD 3 15.5nm	- STARTING LINE Located approximately in the area of the mark 0	
	- OFFSET MARK - Sailing Instruction 8.3	
	- MARK 5	ON PORT
	- ROSELET	ON PORT
	- MARK 8	ON PORT
	- MARK 0	ON PORT
	- MARK 9	ON STARBOARD
	- FINISHING LINE Located approximately in the area of the mark 3	



MICRO CLASS WORLD CHAMPIONSHIPS - ANNECY 2017

ILLUSTRATING THE COURSE - LONG DISTANCE RACES
COURSE - LD 4

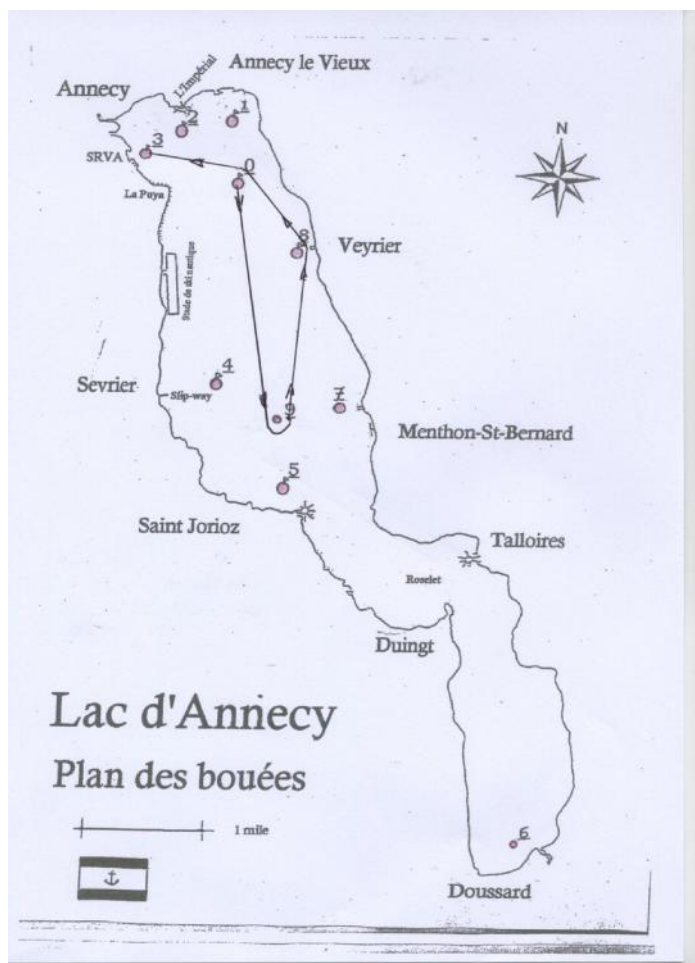


COURSE / DISTANCE	MARKS	<i>REQUIRED SIDE</i>
LD 4 15nm	- STARTING LINE Located approximately in the area of the mark 0	
	- OFFSET MARK – Sailing Instruction 8.3	
	- ROSELET	ON PORT
	- MARK 0	ON PORT
	- MARK 9	ON STARBOARD
	- FINISHING LINE Located approximately in the area of the mark 3	



MICRO CLASS WORLD CHAMPIONSHIPS - ANNECY 2017

ILLUSTRATING THE COURSE - LONG DISTANCE RACES
COURSE - LD 5

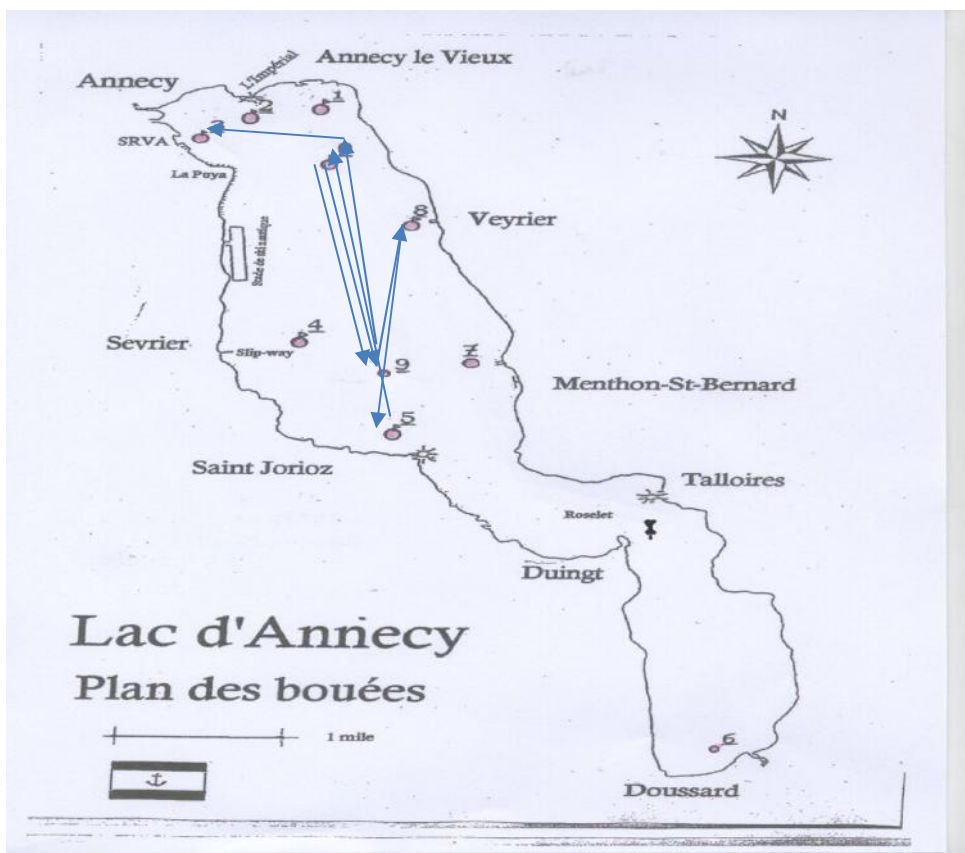


COURSE / DISTANCE	MARKS	<i>REQUIRED SIDE</i>
LD 5 6nm	- STARTING LINE Located approximately in the area of the mark 0	
	- OFFSET MARK – Sailing Instruction 8.3	
	- MARK 9	ON PORT
	- MARK 8	ON PORT
	- MARK 0	ON PORT
	- FINISHING LINE Located approximately in the area of the mark 3	



MICRO CLASS WORLD CHAMPIONSHIPS - ANNECY 2017

ILLUSTRATING THE COURSE - LONG DISTANCE RACES
COURSE - LD 6

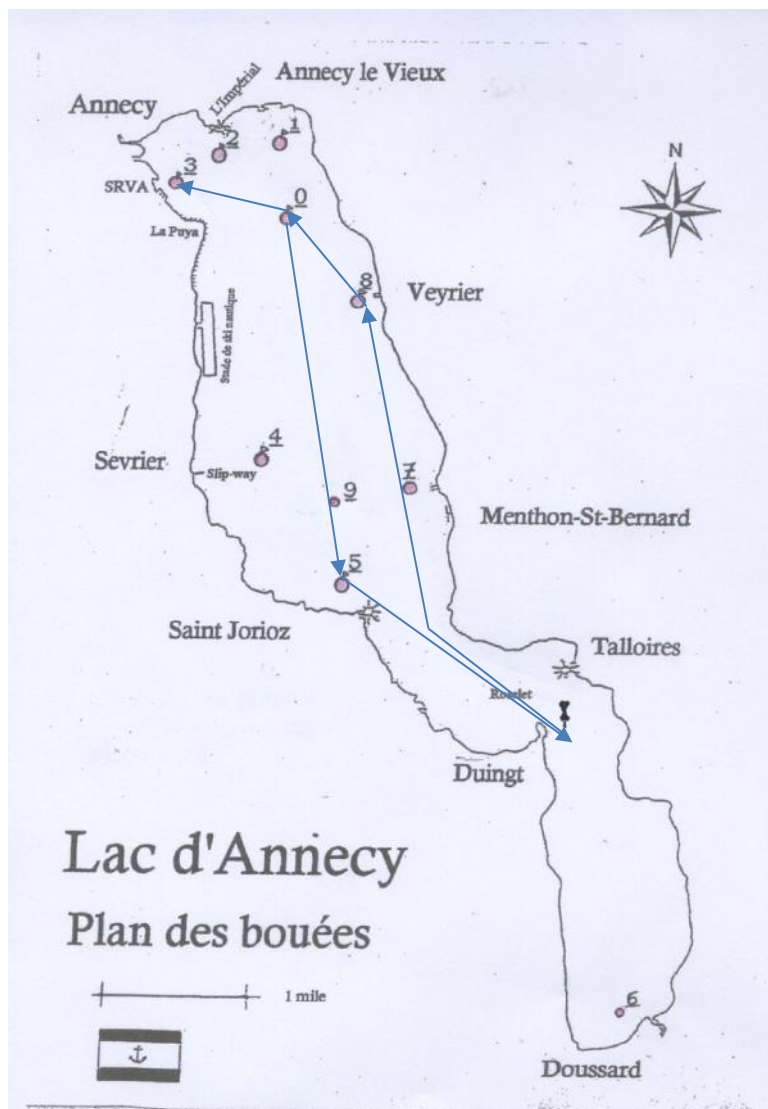


COURSE / DISTANCE	MARKS	<u>REQUIRED SIDE</u>
LD 6 16nm	- STARTING LINE Located approximately in the area of the mark 0	
	- OFFSET MARK – Sailing Instruction 8.3	
	- MARK 9	ON PORT
	- MARK 8	ON PORT
	- MARK 5	ON PORT
	- MARK 0	ON PORT
	- MARK 9	ON PORT
	- MARK 0	ON PORT
	- FINISHING LINE Located approximately in the area of the mark 3	



MICRO CLASS WORLD CHAMPIONSHIPS - ANNECY 2017

ILLUSTRATING THE COURSE - LONG DISTANCE RACES
COURSE - LD 7

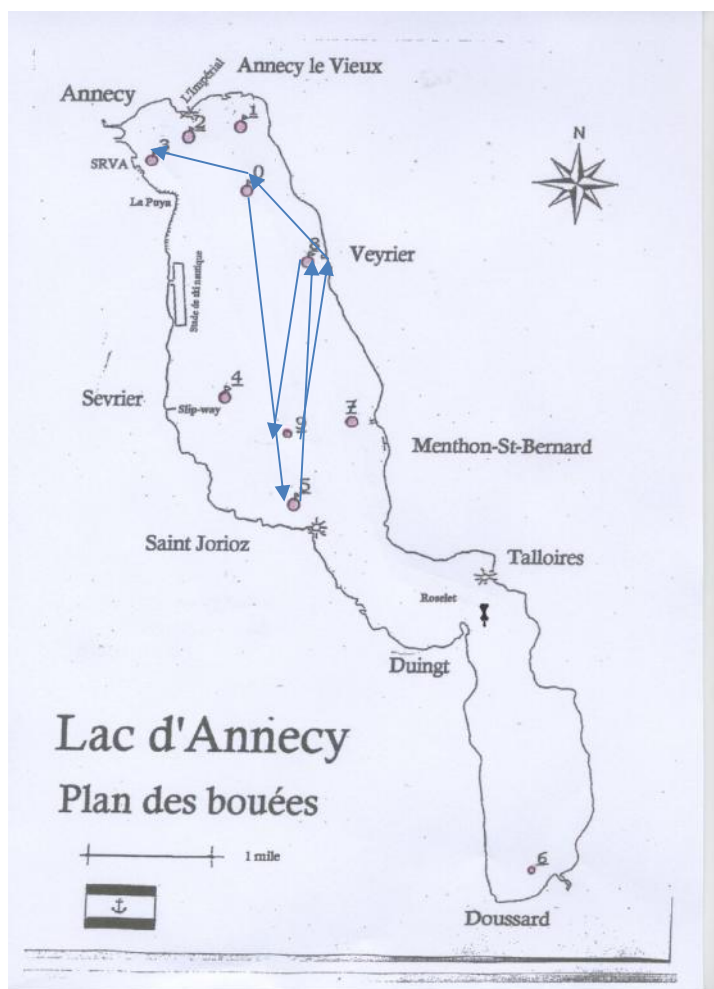


COURSE / DISTANCE	MARKS	<i>REQUIRED SIDE</i>
LD 7 11nm	- STARTING LINE Located approximately in the area of the mark 0	
	- OFFSET MARK – Sailing Instruction 8.3	
	- MARK 5	ON PORT
	- ROSELET	ON PORT
	- MARK 8	ON PORT
	- MARK 0	ON PORT
	- FINISHING LINE Located approximately in the area of the mark 3	



MICRO CLASS WORLD CHAMPIONSHIPS - ANNECY 2017

ILLUSTRATING THE COURSE - LONG DISTANCE RACES
COURSE - LD 8

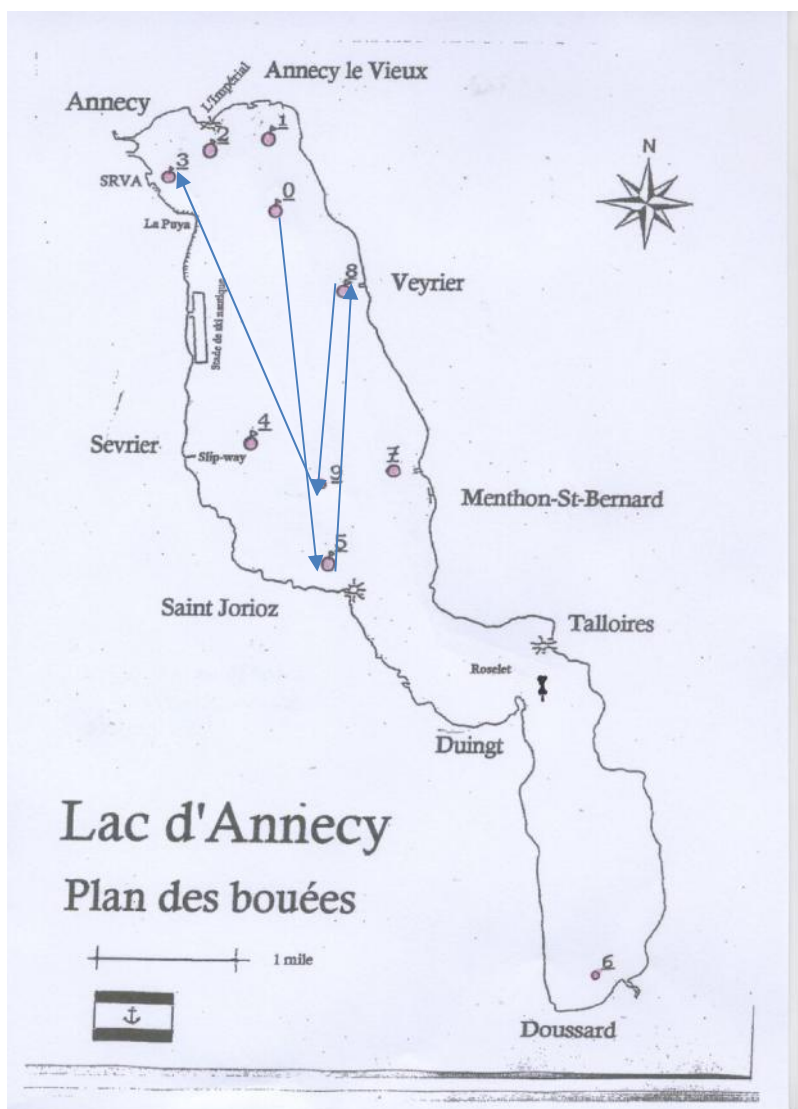


COURSE / DISTANCE	MARKS	<i>REQUIRED SIDE</i>
LD 8 11nm	- STARTING LINE Located approximately in the area of the mark 0	
	- OFFSET MARK – Sailing Instruction 8.3	
	- MARK 5	ON PORT
	- MARK 8	ON PORT
	- MARK 9	ON PORT
	- MARK 8	ON PORT
	- MARK 0	ON PORT
	- FINISHING LINE Located approximately in the area of the mark 3	



MICRO CLASS WORLD CHAMPIONSHIPS - ANNECY 2017

ILLUSTRATING THE COURSE - LONG DISTANCE RACES
COURSE - LD 9

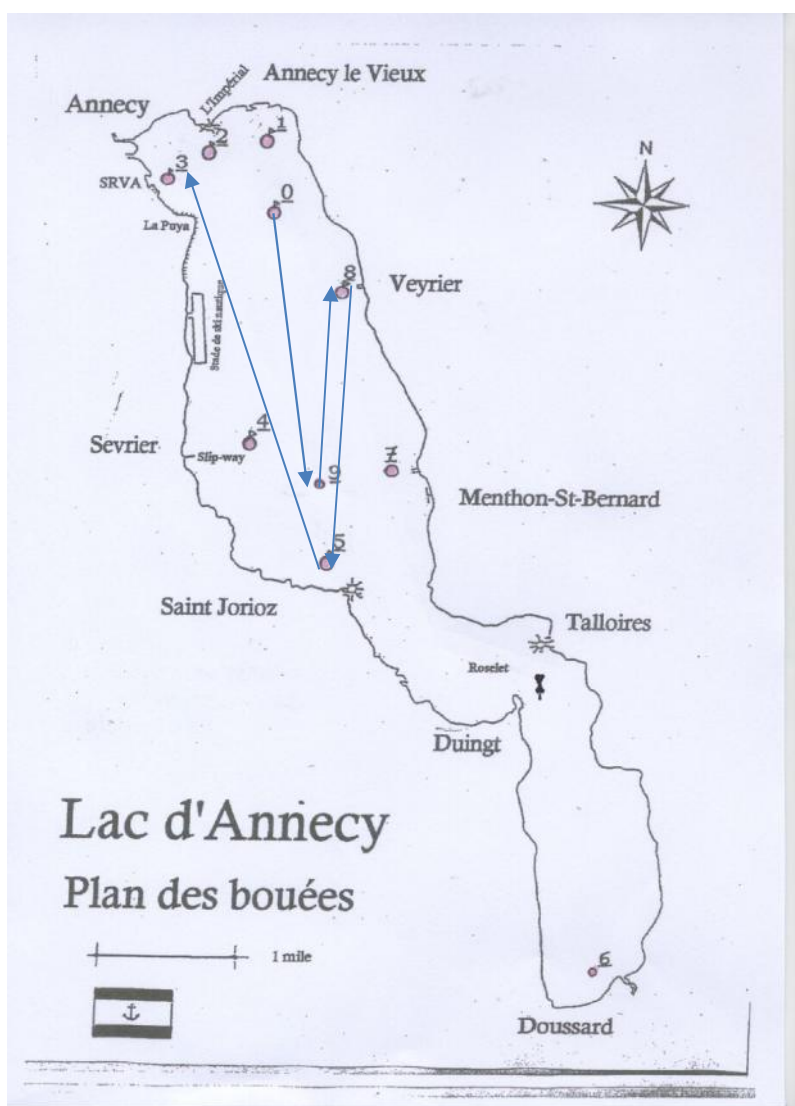


COURSE / DISTANCE	MARKS	<i>REQUIRED SIDE</i>
LD 9 10nm	- STARTING LINE Located approximately in the area of the mark 0	
	- OFFSET MARK - Sailing Instruction 8.3	
	- MARK 5	ON PORT
	- MARK 8	ON PORT
	- MARK 9	ON STARBOARD
	- FINISHING LINE Located approximately in the area of the mark 3	



MICRO CLASS WORLD CHAMPIONSHIPS - ANNECY 2017

ILLUSTRATING THE COURSE - LONG DISTANCE RACES
COURSE – LD 10

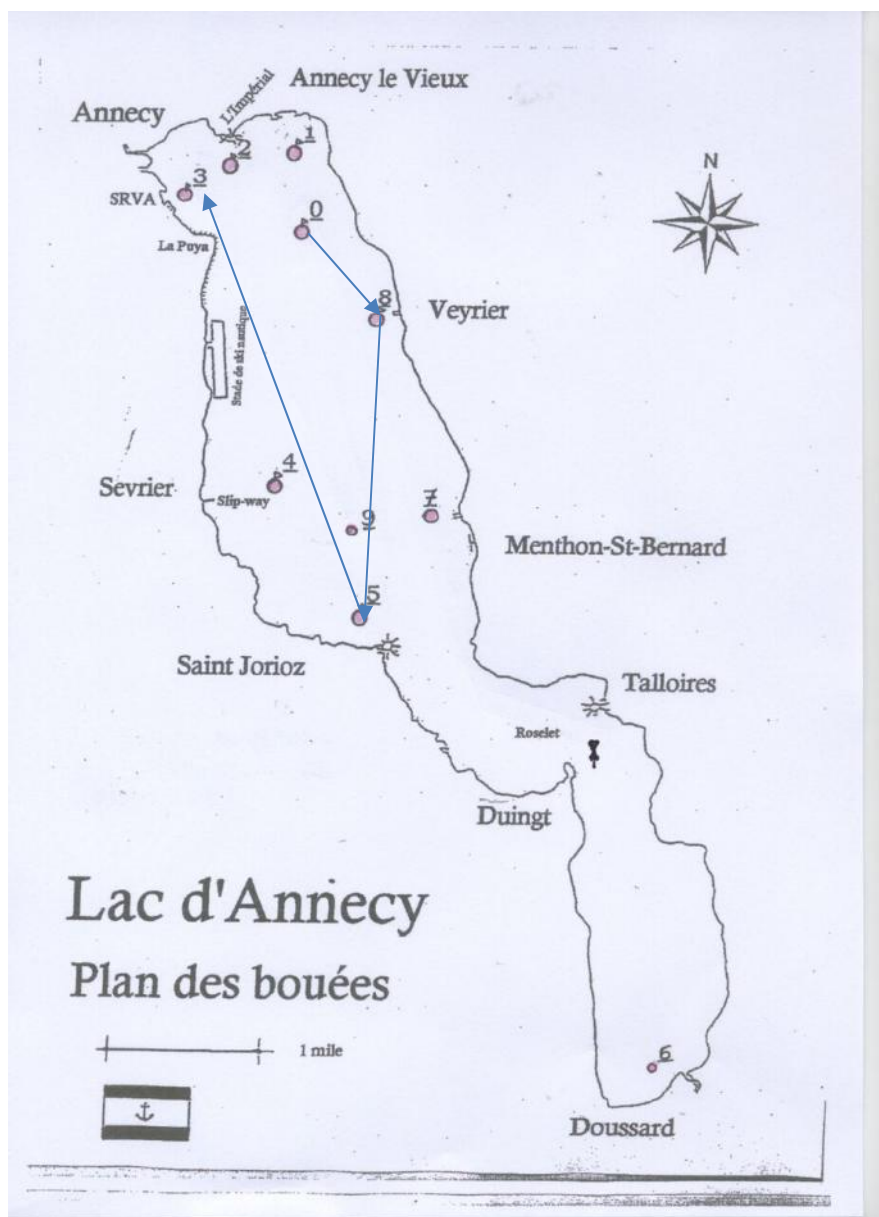


COURSE / DISTANCE	MARKS	<i>REQUIRED SIDE</i>
LD 10 10nm	- STARTING LINE Located approximately in the area of the mark 0	
	- OFFSET MARK – Sailing Instruction 8.3	
	- MARK 9	ON PORT
	- MARK 8	ON STARBOARD
	- MARK 5	ON STARBOARD
	- FINISHING LINE Located approximately in the area of the mark 3	



MICRO CLASS WORLD CHAMPIONSHIPS - ANNECY 2017

ILLUSTRATING THE COURSE - LONG DISTANCE RACES
COURSE – LD 11



COURSE / DISTANCE	MARKS	<i>REQUIRED SIDE</i>
LD 11 7.5 nm	- STARTING LINE Located approximately in the area of the mark 0	
	- OFFSET MARK – Sailing Instruction 8.3	
	- MARK 8	ON STARBOARD
	- MARK 5	ON STARBOARD
	- FINISHING LINE Located approximately in the area of the mark 3	



MICRO CLASS WORLD CHAMPIONSHIPS - ANNECY 2017

APPENDIX 4



NAVIGATION SUR LE LAC D'ANNECY BOATING ON THE LAKE OF ANNECY



UN REGLEMENT POUR VOTRE SECURITE REGULATIONS FOR YOUR SAFETY

INFORMATION SUR LES SECOURS RESCUE INFORMATION

L'appel des secours se fait en téléphonant au 112 (complet) ou 112 par satellite.
To obtain rescue services (fire brigade) dial 112 on the telephone or 112 (satellite phone).

Bateau des autorités de contrôle et de secours
Control and rescue boat



SIGNIFICATION DE CERTAINS PANNEAUX ET BOUEES MEANING OF SOME NOTICES AND BUOYS

- Interdiction de passer
No entry
- Interdiction à toute navigation à moteur
Motor boat prohibited
- Profondeur d'eau limitée
Shallow water
- Obligation d'observer une vigilance particulière
Take special care
- Parcours de ski nautique
Water ski course
- Obligation de limiter la vitesse indiquée en km/h
Speed limit in km/h
- Des restrictions sont imposées à la navigation
Restrictions imposed on boating
- Canal d'accès au port de Thiou vu de la large
Access channel to the port of La Thiou as seen from offshore
- Bouées d'entretien de canal de ski nautique
Buoy marking the limit of the water ski channel

SYMBOLE DES FANIONS SUR LES BATEAUX SYMBOLS FOR PENNANTS ON BOATS

- Bateau de plongée subaquatique
Subaque diving boat
- Bateau en train de poser des filets
Fishing boat setting nets
- Bateau en action de pêche à la traîne
Fishing boat with line
- Bateau à passagers prioritaires
Passenger boat give way
- Bateau tractant un skieur nautique
Boat pulling a water skier

LEGENDE DES ZONES ET DU BALISAGE CAPTIONS FOR ZONES AND INDICATOR BUOYS

- Bande de rivage : bouées coniques jaunes
Anchorage zone : conical yellow buoys
- Prise d'eau : bouées coniques jaunes avec fanion rouge
Water intake : conical yellow buoy with flag
- Balgaine autorisée : bouées sphériques jaunes
Protection motorisée : chapeaux de petite hauteur sphériques jaunes
Specially protected areas : chains of small yellow floats
- Balgaine interdite : débarcadères, ports, rampes de mise à l'eau
Landing prohibited : landing stages, ports, launching ramps
- Stade de ski nautique : bouées coniques jaunes avec pennant "ski"
Water skiing zone : conical yellow buoy with pennant "ski"
- Reculée protégée (interdite à la navigation et à la balgaine)
Protected reserved (barfing and boating prohibited)
- Haut-fond du Bassin
Shallow water ridge at La Rivaz

DOCUMENT A PRESENTER A TOUT CONTROLE DE LA POLICE DU LAC

Les infractions aux règlements particuliers de police, constatées des commandements de 5^e classe, sont punies d'une amende pouvant atteindre un maximum de 1500 €, partie ou double en cas de récidive, et d'une ou plusieurs peines privatives ou restrictives de droits.

THIS DOCUMENT MUST BE PRESENTED IF YOU ARE STOPPED BY THE LAKE POLICE

Conventions of the police regulations are punishable by fines of up to 1500 € as first offence and of double this on subsequent convictions, and by confiscation or curtailment sentences.

Les activités nautiques sont réglementées par un arrêté préfectoral disponible soit dans les Mairies ou Offices de tourisme, soit à la DDEA 74, 15 rue Henry Bordeaux, 74988 Annecy cedex 5, Tél : 04.50.66.77.19. Visitez sur rendez-vous. Site internet DDEA 74 : www.haute-savoie.equipement-agriculture.gouv.fr

Boating activities are controlled by local byelaws, copies of which can be obtained from town halls (Mairies) or Tourist Offices, or from DDEA 74, 15 rue Henry Bordeaux, 74988 Annecy cedex 5, Tel : 04.50.66.77.19. Visits by appointment. Website DDEA 74 : www.haute-savoie.equipement-agriculture.gouv.fr

SCHEMA DIRECTEUR D'UTILISATION DU LAC D'ANNECY MAP OF USE ZONATION OF THE LAKE OF ANNECY



CIRCULATION DANS LA BANDE DE RIVE BOATING IN THE ANCHORAGE ZONE

Zone des "Bandes de rivage" délimitée par des bouées coniques jaunes. Circuler dans la bande de rivage est autorisé à condition de ne pas gêner la navigation et de respecter les règles de circulation. Les bateaux à moteur ne sont pas autorisés à entrer dans la bande de rivage.

Zone des "Anchorage zones" delimited by conical yellow buoys. Boating in this zone is permitted provided that navigation is not hindered and the rules of circulation are respected. Motor boats are not allowed to enter the anchorage zone.

BALGAINAGE INTERDIT (DANGER) BATHING PROHIBITED (DANGER)

BATEAUX A PASSAGERS PRIORITAIRES
PASSENGER BOATS (NOT PERMITTED AT ALL) HAVE PRIORITY

La balgaine et le stationnement des bateaux de plaisance sont interdits aux abords des débarcadères publics, dans le canal de Thiou et son accès. Balgaine interdite dans les ports, le crado de ski nautique, les rivières...

Bathing and mooring pleasure boats are prohibited near to public landing stages and in the La Thiou channel and its entrance. Bathing is prohibited in the ports, water skiing stadium and riversides.

BALGAINAGE PROTEGE DES BATEAUX BATHING PROTECTED FROM BOATS

Zones surveillées et protégées dans les limites matérialisées par des bouées sphériques jaunes. Surveiller et protéger zones au balgaine par bouées sphériques jaunes.

Intérieur en dehors de la bande de rivage délimitée par les bouées coniques jaunes. Prohibited outside the anchorage zone delimited by yellow conical buoys.

BALGAINAGE ISOLEE NON-SUPERVISEE BATHING

Je ne signale pas tout danger à ma convenance. Je m'accompagne par un bateau, pour ma sécurité, en dehors de la bande de rivage.

I do not signal danger by an appropriate means if it is not convenient for me. I accompany myself with a boat, for my safety, outside the anchorage zone.

COMBINAISON GÉNÉRALE RESPECT FOR OTHERS

Respecter les règles de courtoisie envers les autres usagers : pêcheurs, baigneurs, etc... Les activités de chaque user prioritaire.

Respect the rules of courtesy towards other users including anglers, swimmers and people using the shore, so that all can enjoy their pursuits.

DEPASSERMENT - CROISEMENT OVERTAKING AND PASSING

Laisser une distance libre d'au moins 50 mètres et ralentir. Pénalité à double en toutes les manœuvres et situations.

Leave a distance of at least 50 metres free and slow down. Penalty to the right and to small craft and sail.

ENGINS À PÉDALES PEDAL BOATS

Le nombre de places autorisées correspond au nombre de places assises. Ne prenez pas de vos forces, ne vous dirigez pas trop vite du dirigeant. Prenez soin de stabiliser le couple avant de partir.

The number of people allowed on board is equal to the number of seats. Don't over-exert your muscles and don't steer too far from the shore. Take care of the safety equipment (life jacket).

ENVIRONNEMENT (POLLUTION - BRUIT) ENVIRONMENT (POLLUTION - NOISE)

Ne pas dégrader les berges. Respecter les propriétés riveraines et les sites protégés (Roc de Chère, Réserve naturelle de Doussard). Pour les articles mélangés en toutes circonstances, utiliser des produits biodegradables.

Do not damage the banks. Do not enter (damage) properties and protected sites (Roc de Chère, Classified Natural Reserve). For the articles mixed in all circumstances, use biodegradable products.

FAUNE ET FLORE FAUNA AND FAUNA

Respecter la faune. Respecter les sites protégés.

Respect the birds. Reserves are protected sites.